



Dilworth Community Association
PO Box 36023
Charlotte, NC 28236-6023

NON PROFIT
US POSTAGE
PAID
PERMIT NO. 502
CHARLOTTE, NC



Dilworth Quarterly

December 2017

Don't Miss

How can YOU help those who are in need? **Go to page 5.**

What's so new about this old school? **See page 10.**

Historic AND delicious. **Read about it page 16.**

How to stay safe when using your computer. **Page 19.**

What form of transportation is a perfect match for Dilworth? **Find out on page 21.**

It takes a neighborhood of volunteers to create a successful event. **Our thanks on page 25.**

It was a Home Tour for the records. **See how to make it BETTER next year on page 27.**

Summer may be 7 months away, but registration for classes at Tom Sykes start in February! **See page 28.**

Mark your calendars:

The 19th Annual Dilworth Ladies Holiday Party



By Marcy Basrawla

The Dilworth Ladies Holiday Party is a long-standing festive tradition in the Dilworth Community. This year we will hold our 19th annual Holiday Party on Thursday, December 7, from 7-10 pm at Crazy Janes, 2502 Dunavant Street. Tickets can be purchased in advance for \$30 at DilworthLadiesHolidayParty.Eventbrite.com or \$35 at the door. Come join us for drinks and a "Taste of Dilworth" as local restaurants provide delicious food to taste while you're catching up with old friends and meeting new ones. Special thanks to participating restaurants including, but not limited to, Babalu Tapas & Tacos, Bad Daddy's Burger Bar, Dilworth

Dilworth Ladies Holiday Party

Thursday, December 7
7 pm - 10 pm
Crazy Jane's
2502 Dunavant Street

Neighborhood Grille and Kid Cashew. There will also be a raffle for amazing packages donated by local businesses. Back by popular demand, Michael Brynes will be performing live music all night long. And no holiday party would be complete without the service of our own "Dilworth Ladies Men". These wonderful volunteers will be serving food and cocktails to our Dilworth Ladies throughout the evening, which is always a treat! Not only will you have a great time at this perfect Dilworth kickoff to the holiday season, but all proceeds from the evening benefit the Dilworth Soup Kitchen. Last year we were able to raise almost \$6000 to help feed the homeless! Questions? Please contact Marcy Basrawala at marcybas@gmail.com. ■



*Wishing Peace,
Joy, and
Happiness this
Holiday Season*

LIBBY GONYEA
704. 975. 8513
LGONYEA@HELENADAMSREALTY.COM



Table of Contents

- 4 Dilworth Cares
- 9 Neighbors to Know
- 9 Our Kids
- 10 Dilworth Elementary School
- 13 Our Kids
- 14 Neighborhood Environment
- 16 Dilworth Eats
- 19 A Matter of Safety
- 21 Biking in Dilworth
- 22 Land Use
- 25 Dilworth Jubilee Wrap-Up
- 27 Dilworth Home Tour Recap
- 28 Tom Sykes Rec Center Winter Programs

Deadline for Next Issue:

Ads: January 15

If you are interested in advertising in the Quarterly, email Mary Beth Sensabaugh at msensabaugh@carolina.rr.com. Rates and sizes can be found on dilworthonline.org.

Copy: January 28

Copy and ads received after the deadline may be held for a later issue.



The Dilworth Quarterly is written by volunteers and proudly printed on 30% reused and 100% recycled paper. It is published under the direction of the DCA and is mailed 4 times a year to over 4500 households and businesses in the Dilworth community. While we make every reasonable effort to verify the integrity of our advertisers, we do not endorse products or services unless specifically stated.

From the President

As 2017 Draws to a Close

It is amazing my year as President of the Dilworth Community Association (DCA) is nearly at its end. It has flown by and I sincerely want to express my gratitude for being allowed to serve this amazing community, its residents and businesses, and most certainly, the DCA Board. This tireless group of volunteers works throughout the year to support and better Dilworth life. It has been a privilege to work with this fine group of people.

I am proud to have served with the Dilworth Community Association as this year has unfolded. All of our community events have continued to evolve, becoming more popular along the way. Triple B at Triple C was another smash success as it has become an event to which the neighborhood looks forward each spring. The Ladies Spring party was held in a new venue with rave reviews and excellent attendance. The 45th annual Dilworth Home Tour had a record year with great success partnering with B-Cycle to smash attendance records. The Dilworth Jubilee is solidly back as an annual event with another terrific afternoon of food, music, fun, not to mention a delightful Pet Parade! We head into the holidays looking forward to the Ladies Holiday Party. Our events are maturing year to year, building new partnerships in the community and growing neighborhood participation. I feel very fortunate to live in a neighborhood that supports so many community events.

The Dilworth Community Garden again sold out its plots. It has a beautiful new sign and community art, in addition to the amazing plots of veggies, herbs and flowers. The Garden is an amazing place to visit throughout the year as it transitions through the seasons. The DCA also supports neighbor-led efforts to continue the beautification of Latta Park through volunteer work days.

Dilworth Cares, in addition to putting on Triple B at Triple C, has deepened its relationship with the Dilworth Soup Kitchen, building volunteer opportunities and donating proceeds from events throughout the year. We are very fortunate to have a vehicle to encourage giving in our neighborhood.

The Land Use committee continues to be a model for the city in partnering with developers and neighbors throughout Dilworth. Countless hours have been invested in projects such as the Duke



*Courtney Leehman
DCA President*

Energy substation expansion to ensure positive outcomes for the neighborhood and our partners.

We continue to enjoy the support of our CMPD Community Officer, James Gilliland. He attends our monthly meetings bringing updates on crime and safety in Dilworth. We are very grateful for his partnership.

We are deeply grateful for the support of the staff at the Tom Sykes Center, who provide the DCA with meeting facilities throughout the year, as well as storage for our supplies. We look forward to building more opportunities with the Tom Sykes center in the coming years.

The Dilworth Community Association is a great way to get more involved with your friends and neighbors. We hold monthly meetings at 7 pm on the first Wednesday of each month at the Tom Sykes center, and we love to see folks attend. Our committees welcome new attendees and participation.

Each of our community events is a great chance to meet new people, either as a participant or as a committee member. We encourage writers and photographers to submit articles to the Dilworth Quarterly or to our weekly email, the Dilworth Express.

Remember to check our website, www.dilworthonline.org to find these and other community opportunities and to sign up to receive the Dilworth Express.

I am excited for our incoming President, Michael Baker, to lead DCA forward in to 2018. He chaired the Dilworth Jubilee this year and is a long-time Dilworth resident with a deep passion for our neighborhood. Please join me in welcoming Michael to this very important role. I know we are in very good hands with his leadership.

I am very grateful for my tenure serving as President of Dilworth Community Association. My time with the DCA board has given me so many personal rewards and great friends and I thank you all. I want to take this opportunity to encourage each of you to drop by and get involved with the neighborhood through the DCA.

On behalf of the DCA Board, I wish everyone happy and healthy holiday season and a prosperous New Year in 2018. ■

2017 DCA Officers

Courtney Leehman
President

Michael Baker
President Elect

Betty Hunter
Treasurer

Mathew Demetriades
Past President

Keely Edwards
Secretary

Board Members

Term Expires 2017	Term Expires 2018	Term Expires 2019
Keely Edwards <i>Home Tour</i>	Michael Baker <i>Community Garden</i>	John Gresham <i>Land Use</i>
CherylAnne McLean <i>Neighborhood Environment</i>	Mathew Demetriades <i>Communications</i>	Paul Gagnier <i>Neighborhood Environment</i>
Jill Walker <i>Land Use</i>	Sis Kaplan <i>Land Use</i>	Liz Lewis <i>Communications</i>
	Cindy Miller <i>Dilworth Cares</i>	Julie Nofsinger <i>Community Garden</i>
	Aaron Newlander <i>Land Use</i>	Amanda Pipkin Anderson <i>Communications</i>
	Lilly Young <i>Dilworth Cares</i>	Valerie Preston <i>Home Tour</i>

Home Tour Committee

Valerie Preston
2017 Home Tour Chairperson

DCA meets in the Tom Sykes Recreation Center on the first Wednesday of each month at 7 p.m.

Dilworth Quarterly Staff

Mathew Demetriades *Editor*

Mary Beth Sensabaugh *Advertising Sales*

Rachel Hewitt *Design*

JM Graphics *Printing*

Michael Baker
Marcy Basrawla

Officer J.R. Gilliland
Ruth Ann Grissom
Josie M. Harper

Nancy Nicholson
David Preston
Valerie Preston
Max A. Reuter
Jill Walker

Donna James Callaway
Anne Gildea

Erin Holland
Sis Kaplan

Dilworth Cares

By Anne Gildea

Dilworth Cares Q & A

- Dilworth Cares exists as
 - an independent nonprofit 501 C3 organization
 - an informal group of Dilworth women wishing to do good for the community
 - a standing committee and the philanthropic arm of Dilworth Community Association (DCA)
 - a group of ladies who like to gossip and drink coffee once a month
- The neighborhood associations in Charlotte that have a philanthropic component are
 - Dilworth and Myers Park
 - Dilworth and Plaza Midwood
 - Dilworth, NoDa and Elizabeth
 - Dilworth
 - All of the above
- Dilworth Cares has been in existence since
 - 2010
 - 2008
 - 2012
 - since dinosaurs roamed the earth
- Dilworth Cares typically chooses a new nonprofit to support
 - every year
 - every two years
 - when it feels it has served the nonprofit to the best of its ability
 - when the members get bored with the current nonprofit
- The nonprofit chosen by Dilworth Cares on behalf of DCA typically receives the following from the Dilworth Home Tour
 - 20% of the overall proceeds
 - 20% of the proceeds of sponsorships only
 - 20% of the proceeds of ticket sales only
 - 15% of the overall proceeds
- Which of the following organizations has Dilworth Cares sponsored on behalf of DCA since its inception? Circle all that apply.
 - Dilworth Soup Kitchen
 - Friendship Trays
 - Charlotte Family Housing
 - Dilworth Elementary School
 - Freedom School Partners
- Dilworth Cares members typically work the following events each year
 - Dilworth Home Tour by staffing one house
 - Fall and Spring Art Collective Shows by passing out posters and staffing the raffle which benefits the chosen nonprofit for Dilworth each year
 - Assisting with a raffle at the Ladies Holiday Party and the Ladies Spring Party as needed
 - Planning and hosting the Triple B at Triple C, a party that raises funds for the chosen nonprofit
 - All of the above
- Typically Dilworth Cares leverages the annual budget from DCA to raise the following amount of money for the chosen nonprofit in a two year period
 - \$10,000 and \$12,000
 - Between \$20,000 and \$25,00
 - About \$30,000
 - Less than \$2,000 b/c our members use that \$ to make improvements to their homes
- The goals for choosing a local nonprofit include the following. Circle all that apply.
 - Promoting awareness of the mission of the nonprofit in our neighborhood
 - Promoting volunteerism for the nonprofit
 - Identifying particular needs with which we may be able to assist
 - Raising funds for the nonprofit
 - Making them feel welcome in our neighborhood
- Dilworth Cares members choose a nonprofit with close ties to the community in the following way. Circle all that apply.
 - flipping a coin
 - posting an application online and encouraging local organizations to apply
 - reading and reviewing 20+ applications, ranking each application and narrowing the field to a few contenders for site visits
 - casting a final vote
 - the chairperson picks the nonprofit of her choice

Correct answers:

1. c, 2. d, 3. b, 4. b, 5. c, 6. All, 7. e, 8. c, 9. All, 10. b,c,d



no requirements,
no charge,
just come and eat.

2016-2018 recipient of Dilworth Cares

Bus Passes



Imagine

feeling hungry. You know the Dilworth Soup Kitchen (DSK) serves a delicious hot meal each and every Monday. You'd really like to go. It's always so friendly there. You know you'll be welcomed by familiar volunteers and be served with a smile. It's cold outside and raining a bit. You don't have a car. You really don't have the money for a bus pass and it's just too far to walk. So you stay home...

The Dilworth Soup Kitchen volunteers have noticed that the number of guests declines in the winter months simply because the weather prohibits folks from getting there. Won't you help make this winter more comfortable for our Dilworth Soup Kitchen neighbors? Let's shower the Soup Kitchen guests with bus passes and gift cards (for those guests who own a car but have other pressing needs). DSK will use your donation to purchase the bus passes and gift cards. The dining room will be bursting with joy on the day those passes and gift cards are distributed.

Simply go to www.dilworthsoupkitchen.org and click on "donations". From there you will be able to send a check or donate online and will be able to specify that the donation be used to purchase bus passes and/or gift cards for the guests.

Above on the right are approximate prices for various types of bus passes* for your information, but any amount will be appreciated!

Thank you for your continued support of the Dilworth Soup Kitchen! ■

Dilworth Cares Continued on next page

1	Roundtrip Pass	\$5
10	Roundtrip Passes	\$50
20	Roundtrip Passes	\$100
1	Local 10 Ride Pass	\$20
10	Local 10 Ride Passes	\$200
1	Local Senior/Disabled Monthly Pass	\$45
10	Local Senior/Disabled Monthly Passes	\$450
20	Local Senior/Disabled Monthly Passes	\$900

* Please note that amounts have been rounded up or down for clarity.

Dilworth Neighbor & Realtor For Over A Decade



Free Private Consultation
chris@cacartergroup.com
CarterGroupRealtors.com
 704-619-8594

Chris Carter
 Broker/Owner/CPA



Application Available Soon for the 2018-2020 Dilworth Cares Campaign!

Dilworth Cares, a committee of the Dilworth Community Association (DCA), is kicking off the selection process for the next Care Campaign by making applications available at www.dilworthonline.org.

Every two years, Dilworth Cares conducts a comprehensive application and interview process on behalf of DCA to choose one local nonprofit organization to become the featured nonprofit partner for our community for a two year period.

The Biennial Care Campaign for the new nonprofit typically begins with the Dilworth Home Tour in September and runs for two years ending in June. A portion of the proceeds from Home Tour ticket sales is earmarked for the new DCA nonprofit partner. In addition, throughout the year other neighborhood events typically include a fundraising component for the nonprofit such as a raffle of goods made possible through generous contributions from local merchants.

Here's the process and timeline for the 2018-2020 selection:

Jan. 4 Application available at www.dilworthonline.org.

Feb. 15 Applications due (email completed form to dilworthcares@gmail.com).

Feb 16-April 4 Dilworth Cares Steering Committee members review applications. Site visits may be scheduled as needed.

April 4 Agency selected and email notifications sent to all applicants.

Announcement of Biennial Care Campaign Agency is made at the DCA Board meeting and submitted for posting on DCA website.

June Public announcement appears in the June issue of *Dilworth Quarterly*.

Sept Kick off for the new Care Campaign begins with the Dilworth Home Tour.

DCA and the Dilworth Cares committee will regularly highlight service opportunities with our nonprofit partner in the Dilworth Express. Other goals include promoting awareness of the mission of the nonprofit, identifying particular needs with which neighbors may be able to assist and making the nonprofit feel welcome in our neighborhood.

Applicants should meet one of the following criteria:

1. The selected agency must be physically located in Dilworth. **OR**
2. The selected agency must serve residents of Dilworth. **OR**
3. There is an established strong link between the agency and the Dilworth Community.

Please direct any questions regarding the selection process or the Dilworth Cares Committee to Anne Gildea at dilworthcares@gmail.com. Meetings of the Dilworth Cares steering committee are usually held the first Wednesday of the month at varying times and locations.

Previous Recipients of Dilworth Cares

2016-2018
Dilworth Soup Kitchen

2014-2016
Freedom School Partners

2012-2014:
Charlotte Family Housing

2011-2012:
Friendship Trays

2010-2011:
Dilworth Elementary School

2009-2010:
Pat's Place



Building
for the Future,
Preserving
the Past.

Concept Building
and Restoration

809 McDonald Avenue • Charlotte, North Carolina 28203
Phone: (704) 334-8777 • Email: bjorn@conceptbuilding.net



Where your pets are our family.

Matthew Wheelock, DVM - Jill Smith-Wheelock, DVM
Michelle Managan, DVM



We're right around the corner.
Come see what all the excitement is about!!

704-808-PETS (7387)
www.DilworthAnimalHospital.com
814 East Blvd
Charlotte, NC 28203

Your Best Source for Residential Real Estate.



TAMMI BRADY
704.408.1500



SUZANNE CODDINGTON
704.589.7172



SARAH CRAFT CURME
704.578.7011



JOAN GOODE
704.953.3035



SUZY HUBBELL
202.607.5688



HEATHER MACKAY
704.661.0635



VICKY MITCHENER
704.517.0177



MICHAEL NESTER
704.408.3468



CATHARINE PAPPAS
704.661.2402



ISABEL ROBERTS
704.607.5560



JIMMY & SHARON ROUNTREE
704.608.0448



SHELLY RYDELL
704.649.6530

Proud to Celebrate 25 Years of Opening Doors in the Queen City.

Depend on our keen diligence for a smooth, satisfying real estate experience, time & time again. Located in Eastover & South Charlotte!



704.342.1000



Discover more on our website at dickensmitchener.com

Neighbors
to
Know

Making A Difference

Positively Dilworth

By Erin Holland

A group of local Dilworth girls raised \$500 to help Hurricane victims by having a drink stand out during GreekFest.

Meghan Holland gathered a group of friends to help her run the stand: Maggie and Catherine Schilli, Charlotte Powell and Hailey Guella all participated. All funds raised were donated to two organizations that are responding to the hurricane crises in the southern United States.

Many folks were happy to buy a drink and donate a little extra, and they really liked the mix of drinks that the girls picked to sell. Residents of the 400 block of E. Worthington were also instrumental in being enthusiastic supporters by making sure the girls had enough drinks to sell and ice to keep them cold. ■



Maggie Schilli, Meghan Holland and Charlotte Powell (7th graders at Holy Trinity Catholic Middle School).







THE ULTRA RUNNING COMPANY



110 West Blvd.

“ULTRA is what YOU make it.”

Find out what makes the Ultra Running Company Charlotte’s highest rated running store for runners and exercise walkers of ALL levels - the Queen City’s best selection of shoes, clothes and necessities in an inviting, locally owned environment!

www.LearntoLovetoRun.com



1027 Providence Road












Dilworth Elementary School

The "New" Dilworth Elementary

By Donna James Callaway

Like the Dilworth neighborhood itself, Dilworth Elementary School has a long rich history. Built in 1904, it is listed on the National Register of Historic Places and is the oldest school building still in use by students in North Carolina. As a parent of a third grade and fifth grade student, I am proud to call it our school.

Our school is a neighborhood school. However many people may be surprised to know that several of our Charlotte neighborhoods attend Dilworth Elementary. Myers Park, First

Ward, Wilmore, and portions of the Freedom Park area attend Dilworth. Dilworth is a diverse school, where about 30% of the student population receives free or reduced lunch.

Dilworth Elementary is a very successful school. Not only did Dilworth earn an A+ on the North Carolina School Report Card, but also received an "exceeded growth" rating during the 2016-2017 school year. The growth measurement is a reflection of how well every student is progressing in a school, even those students who come to school without the benefit of early home educational support.

So what is the secret sauce? How is a diverse, public school succeeding where other schools flounder? I believe the magic at Dilworth lies in three areas, the leadership, the faculty and staff commitment, and parent and community involvement.

Our leader at Dilworth Elementary is Terry Hall. Mrs. Terry Hall is the current principal and a Dilworth resident. Third grade teacher Katie Schroeder describes Mrs. Hall as "a wonderful leader of our school because she has unwavering faith in her staff. She has confidence in each of our abilities to make the right decisions for all of our students". Mrs. Hall hires great teachers and supports them. Under her direction, Dilworth Elementary has full time Math and Literacy specialists as well as a full time Spanish Language teacher.

The highly qualified faculty at Dilworth works to insure that each student is given instruction specific to their unique needs. Every single student is taught on their level and challenged to grow as a student. The teachers at Dilworth do not teach with a "one size fits all" approach. If you visit a classroom at Dilworth Elementary, you might find one student creating a presentation on a computer while another student reads a book on an exercise ball. You might find students learning in a small group next to the indoor koi pond. The ability to address each student as an individual is an indication of the highest level of teaching and support for our students.

Our community and parents support our school as well. The current Dilworth Elementary PTA has over 400 members who

serve on more than 50 committees. The PTA at Dilworth hosts events like the Father Daughter Dance and the Fall Dragonfest. The PTA also runs two financial campaigns, which fund things like classroom technology and fieldtrips for all students.

Dilworth is a recipient of generous support from neighborhood sponsors. The Tom Sykes Recreation Center is a Dilworth Elementary partner and provides many afterschool activities for Dilworth students. Tennis, Legos, Chess, Girls on the Run and Let Me Run are a few of the many after school offerings.

With all the success and support, our neighborhood was surprised when CMS decided to make a big change for Dilworth Elementary. Last spring CMS leadership announced plans to combine Dilworth Elementary and Sedgefield Elementary beginning with the 2018-2019 school year. While there was initially a lot of confusion and apprehension due to a lack of information, both communities have worked hard to put things in play that will create a cohesive school of excellence.

The plan will create a "New" Dilworth Elementary with two campuses. The pre-kindergarten through second grade students will be housed at Sedgefield campus, the current Sedgefield Elementary location. The third through fifth grade students will be housed at the Latta campus, the current Dilworth elementary location. Two neighborhoods that currently attended Dilworth and Sedgefield Elementary, First Ward and Southside Homes, will be reassigned to other CMS schools in the pairing plan.

Beyond the two campuses, the "New" Dilworth Elementary will look very much like the current Dilworth Elementary. Families currently at Dilworth will make up 70% of the student population. Our current principal, Terry Hall, will remain as principal of Dilworth Elementary. She will divide her time daily between the two campuses. Each campus will also have an assistant principal and a dean. Mrs. Hall began hiring for Sedgefield Elementary this Summer. This school year she hand picked two thirds of the current Sedgefield faculty.

Educational planning has already begun to make the transition to a two campus school seamless. Along with a central principal, a central School Leadership team and Parent Teacher Association will lead both campuses. Teachers from both locations are already planning together and attending combined professional development.

There are many advantages to a two campus school. Both campuses will be able to focus on only three grade levels of instruction. Students will be in facilities that are tailored for their age range. The Latta campus will have materials and classrooms that facilitate learning for older students like robotics labs, or

science labs. The Sedgefield Campus will have space to do more hands on manipulative learning. Our Dilworth kindergarten teachers are looking forward to the bright, large classrooms at the modern Sedgefield campus. Younger students will also be in a school with students closer to their maturity level.

Having two campuses will also alleviate the overcrowding issues at the current Dilworth. Specials teachers who currently teach from mobile carts will have

designated classrooms. The number of students at Dilworth Elementary last year was about 730. Under the new plan, each campus is estimated to have around 350-400 students.

Charlotte Mecklenburg Schools have committed to providing transportation from the Sedgefield campus to the Latta campus after school. This means that all of the current activities that are located at the Latta campus will be easily accessible to the younger students.

Like many current Dilworth Elementary parents, I am very excited about the pairing. I love our neighborhood school. I believe that the New Dilworth Elementary will be just as amazing as our current Dilworth Elementary. I am happy to welcome Sedgefield to the neighborhood and can't wait to see what our communities can create together. ■

DILWORTH ELEMENTARY

Linda Coad CPA, PA
CERTIFIED PUBLIC ACCOUNTING

Providing People with Knowledge
Over 20 years of experience in public and private accounting

- Tax**
 - Individual, Estate and Corporate Tax Services
 - IRS Representation
 - Business Entity Selection
- Accounting Staff Training and Support**
 - Start-Up Business Consulting
- Business Consulting**
 - Budgeting and Cash Flow Analysis
 - Accounting Software Selection, Conversion and Implementation
- Forensic Accounting and Litigation Support**
- QuickBooks® Pro Advisor**
 - QuickBooks® Training Classes*
 - QuickBooks® Advisory Services
 - Bookkeeping Services

*QuickBooks training classes beginning May 23rd

www.lindacoadcpa.com NC CPA. CPA license number 25470.

WHO BETTER TO HELP YOU SELL YOUR HOME...

...Than a Broker/Realtor® who ...

- has lived in Dilworth for over 25 years
- is a consistent Top Producer
- is well-connected in the real estate community
- is a strong negotiator
- has a proven track record listing and selling homes in Dilworth for over 25 years



JANE ANNE McDERMOTT

Broker/Realtor® & Top Producer

DILWORTH RESIDENT

704-651-9690

janeanne@hmproperties.com
hmproperties.com

I would love to have the opportunity to earn your business!





Simply the best...

*Sophisticated, fashionable yet comfortable interiors with YOU in mind • Modern and Transitional designs for your home or office
• Fabrics, custom upholstered furniture, custom drapery and window shades, lighting, rugs, bed linens, case goods, original artwork, reupholstery, pillows and accessories • No design fees with purchase • Free local delivery • Day and evening appointments available*

Thank you for 21 years in business!

CRAZY JANE'S

2502 Dunavant Street, South End 704-332-5454 crazyjanesinc.com



Our Kids

Transitioning Into High School

By Josie M. Harper and Max A. Reuter

"The secret to change is to focus all of your energy, not on fighting the old, but on building the new." –Socrates.

High school can be an intimidating transition, we know by experience. One of us is a ninth grader at Charlotte Country Day School, and one of us is an eighth grader at Trinity Episcopal School. We both know that kids can be worried about change, but building new relationships is one of the best opportunities you have when becoming a freshman. Joining sports or clubs helps to make the new environment seem smaller and relieves the stress of teenage life. Being a part of something helps you meet people who share similar interests.

Joining different activities helps to relieve stress from school and other aspects of life. From my personal experience (Josie), swimming can be an outlet where I can channel my stress into positive energy in my workouts. I have also met some of my closest friends through swimming. Being part of a team is an amazing life lesson, and meeting older kids on the team has made me feel less anxious about going somewhere new, because I know that I will have friends no matter which school I attend.

Maybe you don't crave exercise, but don't worry! Clubs can also play a big part in stress relief. They can be a good learning experience, but also really fun! Most importantly, it is a great way to make friends. From my personal experience (Max), being a part of two clubs has not only let me meet new people, but I've also learned how to look at things from different perspectives.

Lots of kids are worried when they make the transition from a small school to a larger school. Having fun and meeting new people can make the awkward transition more comfortable. Here are a few tips we have for rising ninth graders:

- Step out of your comfort zone. (No matter how uncomfortable it makes you feel.)
- Don't be afraid to try new things. (Yes, we know you've heard this a million times!)

- Always introduce yourself and be open to meeting new people.
 - Don't worry if people don't reach out right away. They are probably just shy, and are going through the same exact thing as you!
 - Every club is cool! Don't let anyone tell you otherwise! Be a part of what you want to be a part of!
- Although it can be scary at times to start something new, we encourage everyone in high school or going into high school, to put themselves out there and don't be afraid of change! ■

ED BAESEL COTTINGHAM CHALK HAYES
Broker / Realtor®
704.621.0613 Mobile
ebaesel@cchrealtors.com

I know DILWORTH because I've live here*
*for 30 years!



Neighborhood Environment

Update on Latta Park Progress

Creating a Refuge for Birds, Animals and People

By Nancy Nicholson and Ruth Ann Grissom

- During our September workday, Parks and Rec staff and our volunteers removed 2 tons of invasive plants, including Privet, Honeysuckle and English Ivy, from the stream area.
- During the October workday, Parks and Rec, Dilworth United Methodist Church and our volunteers installed a Pollinator Garden and hand-pulled Japanese Stilt Grass from our shrub area. Under the leadership of Sallie Anna Barton and Myron Greer, Dilworth United Methodist youth group will maintain the pollinator garden.

■ November is the perfect time to plant, and plant we did on November 4 with Dilworth neighbors, friends and The Charlotte Garden Club. Over 250 plants were installed along the stream and in the Park Road/Park Avenue area. We realize that many of the plants are very small, and some will not make it, which is why we planted so many. (Note for your own gardens, it is just fine to continue installing in the cold months while plants are dormant.)

■ Also on November 4, the Charlotte Garden Club provided plants and labor to add to our planting area near Park Avenue and Park Road.

■ 12 bird houses have been donated and will be put up this winter. Our thanks to Charlotte Audubon for agreeing to clean them at the end of each nesting season.

■ Parks and Rec is rebuilding Latta's amphitheater. It will be a wonderful resource for family reunions, birthday parties, weddings, school functions, plays and more.

■ First Thursday 10-12:00 workdays will continue with the exception of December, July and August.

■ Our next big workday will be Saturday, February 3, 2018, 1:00 - 4:00, with a rain date of February 10.

Many thanks to our friends and neighbors, Dilworth United Methodist Church, Charlotte Garden Club, DeSignia Landscaping, Fred Miller and the Charlotte Woodworkers Club, and Mecklenburg Audubon. Special thanks to Tim Turton, Alesia Shore and Phillip Clarkson with Parks and Rec for their ongoing coordination and maintenance.

If you would like to be added to our volunteer/interested folks list, please email nancyenicholson@gmail.com. We would love your help!

For native plant information: www.wildflower.org/collections

For information about invasive plants: www.csrees.usda.gov/Extension/index.html ■

Recently Installed:

- Red Chokecherry (Aronia arbutifolia)
- Beautyberry (Callicarpa americana)
- Carolina Sweetshrub (Calycanthus floridus)
- Virginia Sweetspire (Itea virginica)
- Inkberry Holly (Ilex glabra)
- Winterberry Holly (Ilex verticillata)
- Spicebush (Lindera benzoin)
- Arrowwood Viburnum (Viburnum dentatum)
- Fragrant sumac (Rhus aromatica)
- Smooth sumac (Rhus glabra).



Our youngest volunteer: Stefan Gagnier



The Charlotte Garden Club which contributed plants and their enthusiastic labor as they installed. Michael and Michelle Styers coordinated their effort.

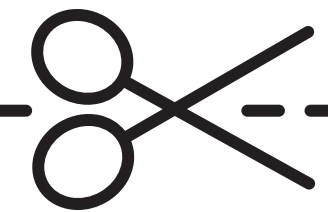


Elizabeth Leland and Leslie Perlik, hard at play

RUGculture



Please stop by and see the amazing collection of hand knotted rugs. We also offer rug cleaning, repair services and design services.



30% Off Rug Cleaning

Free Pick Up and Delivery in the Charlotte Metro Area.

Phone - 980-207-3287

316 E. Blvd., Charlotte, NC 28203

www.rug-culture.com

Manis | Pedis | Gel Polish | Waxing | Mink Eyelashes

GIVE THE GIFT OF "ME TIME"

GIFT CERTIFICATES AVAILABLE ONLINE AND IN-STORE

CHARLOTTE'S PREMIER NAIL BAR.

SOUTH END 704.954.0004 SOUTH PARK 704.643.9199 MYERS PARK 704.375.3488 BALLANTYNE 980.819.8330 HUNTERSVILLE 980.689.2014 WAVERLY COMING SOON

POLISHED Nail Bar

IPOLISHED.COM

f /POLISHEDNAILBAR i /POLISHED_NAIL_BAR t /IPOLISHED p /POLISHEDNAILBAR



An Historic Gem in Dilworth

By Sis Kaplan

Old timers remember it as The White Horse. For all others it has always been 300 East. But by either name or whatever point in time, it has been and is one of Dilworth's favorite restaurants.

In 1975 Cathy Coulter was a waitress at the White Horse restaurant located at 1601 East Blvd. She said "it was fun to be a waitress, it was like going to a party every night". Cathy soon became general manager but the restaurant closed in July of

1985. On Valentine's Day in 1986 The White Horse reopened at 300 East Blvd. and a year later Cathy became the owner. Cathy said, "in an accidental conversation in Freedom Park with Brian South, who had bought and developed the property, I found out he was looking for a restaurant to go into his new space at 300 East Blvd". "Before renovation, the building had been 3 apartments full of rats and roaches" according to Cathy.

On opening day the people were lined up around the corner to again eat at the all new White Horse. Danny Romine

Powell, then a staff writer and currently the book editor for the Charlotte Observer reviewed the restaurant in the Observer. The headline for the article read, White Horse Limited Gallops into New Neighborhood. Some excerpts of the review "In February, when the White Horse moved from its location in the Dilworth Cooperative further east on East Boulevard to a turn-of-the-century house toward South Boulevard, it definitely rose to a new height. Architects Murray Whisnant and John Bivens transformed what was a house of rental apartments into a spacious, airy two-story restaurant with a second-floor balcony that overlooks on of the first floor dining rooms. There's a nice mix of cozy wooden booths upstairs and downstairs. Upstairs, the architects retained the original gridded windows, which happily remind you that you're still in a turn-of-the-century building in a turn-of-the-century neighborhood. Husband Lew Powell and I have been eating at the White Horse since its days on West Second Street. We know the menu well, and we know what we like. I like the chunky chicken salad (\$4.50) and Lew likes the Charlie O'Tuna's Casserole (\$4.24)".

The White Horse name change to 300 East took place in the late 1980's. The menu expanded to one of a full restaurant around 1996. Cathy said, "we want a comfortable feeling, not stuffy. We want you to feel like you are at home but we do the cooking and serve you nicely". She doesn't try to be like all the new restaurants and she loves the presence of history in her building.

When I asked Cathy what had been some of the fun times she immediately spoke of some of the parties they used to have like the "under wear party" in the dining room when the police drove by and everyone ducked way down. She claims the police continued on their way. In 2015 300 East was filmed for Dinners, Drive Inns and Dives, the number 1 show on the Food Network and they are still replaying the show to this day.

Cathy believes paying attention to details is one of the reasons her restaurant is successful. In the beginning she was a bartender, did all the ordering, handled all the bookkeeping, waited tables and did whatever was necessary to make things work well.

In the early to middle 1990's the restaurant expanded its menu to that of a full service restaurant. In 1995 *The Charlotte Observer's* then restaurant writer, Helen Schwab reviewed 300 East.

"Slide into a booth at 300 East and order a regional brew. Browse the menu, the decor, the crowd. About as contemporary and eclectic a collection (except the booth) as you'll find this side of Trendy. Yet the whole thing has been spinning off since - well let's just say Charlotte has love turkey-salad-by-any-other-name and overstuffed potatoes for more than a decade. And you know how fond of tradition Charlotte isn't.

Chef Joanie Babcock consulted on a menu change last year and eventually came to stay. Her aim and that of proprietor Cathy Coulter: funky fine dining with more innovation, more excitement, more verve. With nearly 30 years of history between the two women, they're excited about change - but not so excited they've turned stupid. Plenty of well-loved standards remain. If it's not broken, don't fix it.

Best of what we tried: an appetizer of baked, marinated goat cheese and garlic cloves (which requires more bread than you get) ; penne with fat shrimp in basil cream, made smoky with sundried tomatoes; and an abundant well-seasoned black bean burrito with excellent fresh salsa.

Servers navigate the house's idiosyncrasies with speed, and can steer you as well through beers and wines as they do the food - and that's quite well indeed".

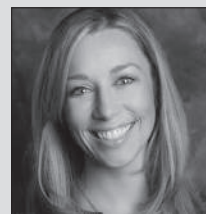
Cathy is extremely proud of her daughter, Ashley Biven Boyd, the pastry chef for 300 East and Heritage. Ashley has an outstanding reputation as a top pastry chef in the area. In 2016 she was part of a group of chefs who were asked to cook at the James Beard House in New York.

When I asked Cathy if she had ever wished she had done something else she replied, "Yes I would like to have been a spy or a detective". We are pleased she chose to be in the restaurant business in Dilworth. ■

Savvy + Co. Real Estate congratulates Sarah Martin for selling more real estate in Dilworth than any other agent!

#1 in Sales in Dilworth!

#1 in Total Sales Volume from June 2016 - October 2017



Sarah Martin

Broker, REALTOR®

(704) 604-2445

Sarah@DilworthCharlotte.com

www.DilworthCharlotte.com

Call Sarah today to talk about how to make your move!

Savvy+Co
REAL ESTATE



Peter Bell, PLLC, the Dilworth neighbor you can count on for a variety of financial, accounting, and tax services to individuals and small business.

Visit our website for more information at peterbellpllc.com

1735 Dilworth Road East
704.525.9999

Peter Bell, PLLC
a CPA firm

Food, Drinks, Fun.



Head over to Dilworth's favorite local neighborhood spot located on the corner of Park Road and Ideal Way. Enjoy our great food, craft beer, sports on TV and our huge new back deck! Open for lunch.

Stop by and say hello! 2200 Park Road • 704.335.0033



A matter of Safety

Cyber Safety

By Officer J.R. Gilliland



Officer J.R. Gilliland, Charlotte-Mecklenburg Police Department

While thinking about some of the biggest threats to your safety, I would be remiss if I didn't address fraud and online security. Especially, since October was National Cyber Security Awareness Month. Whether you know it or not, everyone has been targeted for a possible internet scam. I don't have the space to describe all the possible scams, but they include everything from IRS imposters to the "Long-lost relative" needing money in a foreign land. These criminals invade your home by any and every possible means, from email and telephone to knocking on your front door. I can tell you that law enforcement will never call and threaten arrest, "Unless you pay a certain amount". You can verify if there are active warrants by contacting the law enforcement agency directly. Another popular scam is to offer to send you a check and in return, you pay a small fee but keep the remainder. By the time you deposit the check and it is found to be fraudulent, the virtual suspect has disappeared! You should always:

- Ask questions
- Listens carefully
- Refuse to be pressured
- Ask for things in writing and contact numbers
- Check references
- Remember, "If it seems too good to be true, it probably is"

Also, take some time to review your passwords, especially for the most sensitive accounts, such as financial and email. Most often, many of these are linked together, and if a criminal gains access to one, they gain access your whole world!

- Don't use actual words, replace letters with a special character and number

- Think "Longer is Stronger"
- Use different passwords for your devices
- Know how to lock/disable your device if stolen
- Avoid using passwords in public Wifi locations
- Change passwords

If you have been a victim of fraud, call 911 if within Mecklenburg County. To report an internet crime, file a complaint with the FBI's Internet Crime Complaint Center at IC3.gov and the North Carolina Attorney General's office at ncdj.gov.

Stay safe! ■



CCA CAROLINAS
CONSTRUCTION
ATTORNEYS

The Foundation for your Business



BUSINESS LAW • CONSTRUCTION LAW
GENERAL COUNSEL TO BUSINESS CLIENTS

CHARLOTTE SOUTH END
1514 South Church Street, Suite 101
704.376.3030
ron@moretzandskufca.com

**MORETZ &
SKUFCA**.PLLC

Attorneys Licensed in
North Carolina and South Carolina

moretzandskufca.com



I'll get
you home
for the
holidays.



Your Dilworth neighborhood expert

Elizabeth Phares

Allen Tate - Center City Office
704.651.8562
elizabeth.phares@allentate.com
allentate.com/ElizabethPhares

Dilworth resident since 2000.

Branch leader in listings closed & specializing in the urban real estate market since 2001.



Center City Office:
233 N. Tryon Street

LEADING REAL ESTATE COMPANIES THE WORLD

Center City • Dilworth • Plaza Midwood • Elizabeth • Wesley Heights • Southend • Wilmore • Myers Park



Biking in Dilworth

By David Preston

Dilworth offers a wide menu of transportation options – indeed, one of the great pleasures of Dilworth living is the diversity of ways to get from place to place. Residents often cite “walkability,” and the associated ease of seeing and meeting neighbors on naturally shaded sidewalks, as one of the primary reasons to love Dilworth.

Dilworth’s historical foundation is based on innovative and diverse transportation options – per the Charlotte-Mecklenburg Historic Landmark Commission, the first electric streetcar left Uptown for Dilworth in May 1891, leading to Dilworth’s designation as a “streetcar suburb.” The CMHLC further reports that buyers appeared at the original Dilworth land sale “in hacks and buggies, on horseback and on foot.” The more recent introduction of the Lynx Light Rail line provides Dilworth residents an additional way to get to and from Uptown.

In 2017, this tradition continues, as Dilworth residents have increasingly adopted the bicycle as a viable option for travel. Bike lanes along East Blvd and Park Road allow for bike trips along busier roads. More commonly, Dilworth residents use bikes for trips within the neighborhood, peacefully riding along the quiet neighborhood streets. For many trips within the neighborhood, biking only means a small increase in required time; in many cases, biking can actually take less time, as driving means traffic. In addition, parking – which on many Dilworth streets can mean parallel parking on narrow streets – is no longer an issue.

When venturing from Dilworth to South End, the “Rail Trail” that follows the light rail tracks is a favorite spot for bike rides. A bike ride works for leisurely pleasure rides, or as a way to move among the many dining hotspots, breweries, art galleries, or retail offerings along the Rail Trail.

Charlotte B-cycle offers a new way to ride bikes in Charlotte (full disclosure: the author has an annual B-cycle membership). This “bike share program” has various stations where bicycles can be checked out for short trips around town. After purchasing a 24 hour pass or an annual membership, the rider checks out a bike from a station. The 24 hour pass allows the cyclist 30 minutes to dock the bike at any B-cycle station in the network – at which point, one can check out another bike.

Charlotte B-cycle has several stations in and around Dilworth – including at Carolinas Medical Center, and several stations along the Light Rail tracks. For those new to bike sharing, a popular stop is the station at Freedom Park – perfect for a peaceful afternoon at the park. As a sponsor for the recent Dilworth Home Tour, B-cycle offered Home Tour participants an efficient and enjoyable method to move throughout greater Dilworth.

Whether it is with a personal bike, or via the bike share program, more and more Dilworth neighbors are finding biking to be an efficient, sustainable, healthy, and relaxing way to get around. Happy biking (and please remember to wear your helmet and obey all applicable traffic laws). ■

GENE MAPLES, DVM
2135 SOUTHEND DRIVE, SUITE 106
CHARLOTTE, NC 28203
(LOCATED BEHIND CHIPOTLE ON SOUTH BLVD)
P: 704.632.8012 | F: 704.632.8016
INFO@SOUTHENDVET.COM

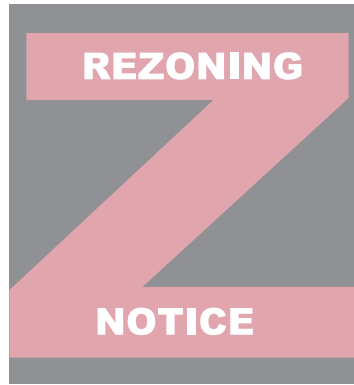
SOUTHEND
VETERINARY CLINIC

SOUTHENDVET.COM



www.myrongreer.com
704.372.0927

Myron Greer
Garden Design Horticulture



Land Use

Hey Duke, Be a Good Neighbor

Let's just be candid here. The Duke Energy substation on Kenilworth and Scott Avenues is a complete eyesore. Built back in 1963, it sits crammed on a lot straddled by residential neighborhoods that are literally 100 feet away. There is really nothing quite like this scenario anywhere in the United States that we (or they) have been able to find. Substations are typically less invasive or are placed in areas that are not residential.

And while it might be easy to simply blame Duke Energy for what we all have to look at daily, there are two other entities with blame on their hands. One is the city of Charlotte whose ordinance is woefully lacking with regard to utility sites. And the other is US, as in YOU DILWORTH. Communities across the country

have stood up to the almighty and powerful utility giants and demanded better of them. But here in Dilworth we seem to have lost our mojo.

It has been exactly two years since Duke Energy mailed, per requirement, a letter to residents living within 500 feet of their Kenilworth Substation announcing plans to expand this substation as part of their "long-range strategy to serve the growing region." Neighbors have received no information since then.

It has also been two years since the DCA Land Use committee has made a concerted effort to reach out to Duke Energy in the hopes that we could find a way to make this expansion an opportunity to really fix this outdated site. While they have



(Above) An aerial view of the Kenilworth substation and the expansion (dotted line) before houses were demolished



(Above) Brick wall enclosure for a Knoxville substation

(Below) Kenilworth Substation before expansion



(Below) What Duke Energy is proposing as a wall (appx. 1000 linear feet!)



"LIFE IS EASY HERE"

CANNON PHARMACY

Your Hometown Drugstore

- Convenient drive thru
- Free delivery
- Immunization services
- Low prices
- Friendly services
- Durable medical equipment

YOUR HOMETOWN DRUGSTORE

50

EASY & FAST TRANSFERS. JUST BRING THE BOTTLE.

\$50

Gift Certificate

For any NEW customer transfer. Good for anything in the store.

50

CANNON PHARMACY

Life is easy here.

REDEEMABLE AT ANY CANNON PHARMACY LOCATION

www.CannonPharmacies.com

Chris Han
PharmD,
South End

South End • 2334 South Blvd. • (704) 523-8607

www.CannonPharmacies.com

DICKENS
RESIDENTIAL REAL ESTATE
MITCHENER

Discover Your Dream Home in Dilworth This Holiday Season

Contact Amanda Blackburn & Sarah Curme for more details on these exclusive listings!

301 E Kingston Avenue	520 Olmsted Park Place	1219 E Worthington Avenue	2233 Charlotte Drive
\$1,299,000 4 Bed/3.1 Bath MLS# 3322539	\$565,000 3 Bed/3 Bath MLS# 3317612	\$795,000 4 Bed/3.1 Bath MLS# 3322002	\$869,000 4 Bed/3.1 Bath MLS# 3288932

AMANDA BLACKBURN
REALTOR®/Broker
704.516.9309
ablackburn@dickensmitchener.com

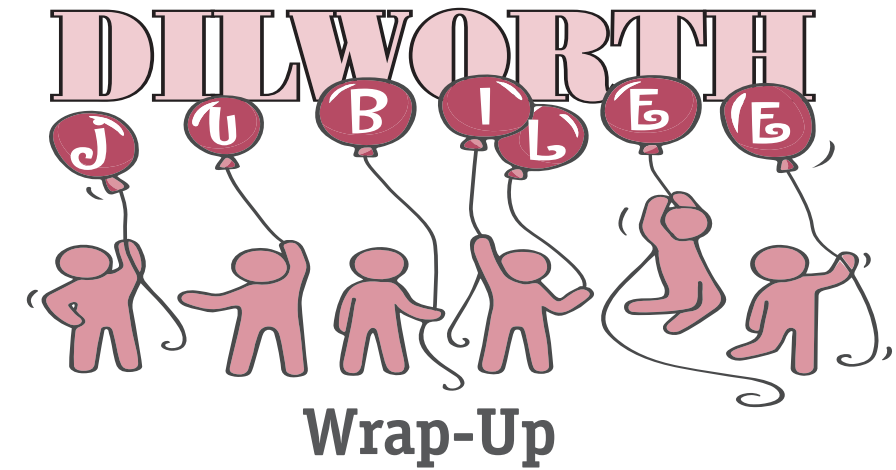
SARAH CURME
REALTOR®/Broker
704.578.7011
scurme@dickensmitchener.com

attended some of our meetings, so far this effort has proven to be both frustrating and rather unsuccessful.

- Here is what we know:
- Duke Energy purchased and demolished the four houses remaining on the block. They now own this entire block (and the block with the Dilworth Garden that reaches to Park Road).
 - Current substation is a little over an acre; the expansion will double its size to 2.2 acres.
 - Energy output will double
 - There will be a 32' by 15' control house (a prefabricated building)
 - Expansion will up voltage from 12kv to 24kv
 - Expected completion is Fall of 2019
- Here is what we don't know:
- Despite asking for two years, why do we still not have basic design renderings?
 - Why is the current site is so poorly maintained?
 - Was there an absence of planning that brought us to this point?
 - Is current substation a brownfield site?
 - Where is all the new energy going?
 - What is the potential noise from expanded substation?
 - What is the potential lighting from same?
- Duke Energy held a "pre-submittal" meeting with the city's

planning department in June 2014. The city ultimately stamp approved their development plan, entitled "Kenilworth Retail", without ever requiring site-line studies, a rendering of the project, or ANY community outreach other than the 500' letter. Our tax dollars support a scenario in which we are completely frozen out of a process that directly impacts us. We should have been contacted (by the city) as neighbors of this big thing so that we could have some early input in the process.

- Here are some examples of how other utilities have worked with communities to create a more aesthetic product (you can look them up):
- Emera Maine - 'Hidden' substation nearing completion - Mount Desert IslanderHidden
 - Anaheim Public Utilities - Hidden Substation - Electric Light & Power
 - Georgia Power - Building Substations in Atlanta - Electric Light & Power
 - Lansing BWL - Hide it or flaunt it?
 - Exelon - Avalon, NJ Hidden Substation
- Dilworth has never been the kind of neighborhood to "kick the can down the road" when it comes to controversial issues or neighbors, so we are not saying "not in my backyard". But we expected so much more from Duke Energy, one of the largest utilities in the world whose headquarters just happen to be a mere two miles from this very substation.
- And we still remain hopeful... ■



Wrap-Up
By Michael Baker, Jubilee Committee Chair

On a beautiful fall day in October, the 43rd Dilworth Jubilee returned. The festivities began with children's events including Dilworth's first pet parade, featuring 21 of the neighborhood's finest canines competing for prizes. Food trucks, craft breweries and Foxcroft Wine lined the Latta parking lot. And from late afternoon until early evening, adult Jubilee goers enjoyed Soul Play, a 10-piece band from Raleigh.

Thank-you to Jubilee sponsors: Dilworth Animal Hospital, HM Properties, Levine Children's Hospital and The Ultra Running Company. And a special thanks to the Jubilee Committee: Kay Chelena, Alice Harry, Denise Johnson, Susan Kemmet, Matt Knox, Jane Anne McDermott, Julie Nofsinger, Carol Poteat and Marcia Rouse.

Save the date for next year's Jubilee: October 6, 2018! ■

2017 Jubilee Sponsors



Budget Blinds
The Best in Custom Blinds and Window Coverings
Serving Dilworth since 2000.

1000s of looks. 100s of colors.
25 brands. 1 stylish you.

Your Local Style Consultant is just a call or click away.

35% OFF*
Blinds, Shades and Drapes

10% OFF*
All Shutters

Schedule your FREE Consultation today!
704.882.2422
mpaulson@budgetblinds.com
BudgetBlinds.com

*Applies to selected Signature Series® window treatments by Budget Blinds.® Some restrictions may apply. Ask for details. At participating franchisees only. Not valid with any other offers, discounts or coupons. Valid for a limited time only. Offer good at initial time of estimate only. ©2015 Budget Blinds, Inc. All Rights Reserved. Budget Blinds is a trademark of Budget Blinds, Inc. and a Home Franchise Concepts Brand. Each franchise independently owned and operated. Franchise opportunities available.

Faux wood blinds with decorative drapery panels

DILWORTH'S LITTLE SECRET
Relocated & Expanded to:
2041 South Blvd., Ste. E
(The Pavilion at South End)
• Interior and Exterior Gardening Items
• Gift Items • Statuary • Pottery
(704) 333-0995

Dear Neighbor:
Call me today for your Real Estate Needs

- Dilworth Resident
- Specialize in House Flipping
- Local office in South End
- Avid Cyclist

You are a ride away from a good mood!

Susan Quigley
Broker/Realtor®
704-907-5987
Susan.Quigley@CBCarolinas.com

Discover The Unique Home Our Design/Build Team Can Create For You!



THE UBG DESIGN/BUILD PROCESS

- ONSITE CONSULTATION:**
Evaluation of your project goals, time-frame and budget feasibility. A high-level review of what makes sense.
- DESIGN DEVELOPMENT:**
UBG's Design Team works with you to generate creative options to achieve your project goals. We help you balance what you want with your budget.
- PROJECT ESTIMATE:**
The scope of work, detailed pricing and construction agreement are generated and presented.
- WORKING PLANS:**
Engineering and construction plans are completed as needed. Plans are submitted for county approval and permitting.
- PRECONSTRUCTION:**
Our design department will assist you in the selection process and cataloging as well as filing for building permits.
- START OF CONSTRUCTION:**
You will be assigned a project manager to coordinate the daily activities on your project.

THE FINISHING TOUCH: HOME DECORATING SERVICES

Working with our Interior Designers and Home Decorators, can insure selections are cohesive with the building plans and the client's vision. Our services include:

- Existing Furniture Audits
- Floor Covering
- Paint & Wall Covering Selections
- Window Treatments
- Furniture & Accessories
- Lighting and More

Collin Haglund
Interior Design Consultant



View Our Online Portfolio at
UrbanBuildingGroup.com

Our unique **Design/Build Team** includes Architects, Kitchen & Bath Designers, Interior Designers, Home Decorators and Construction Professionals.

342 Circle Avenue in Myers Park
PH 704.307.4606
EM JohnMorgan@ubgcharlotte.com



DILWORTH HOME TOUR 2017

By Valerie Preston

Sold out! For the first time in 45 years, the Dilworth Home Tour reluctantly had to turn away visitors. It was a difficult decision. Ticket sales directly support the Dilworth Community Association efforts and our chosen charitable organization, the Dilworth Soup Kitchen. Nevertheless, we are responsible for maintaining a safe and comfortable flow of visitors in the homes. With an amazing team of volunteers and committee members, plus beautiful weather, the 45th annual Dilworth Home Tour was a great success!

The Brem House on East Blvd. got rave reviews! Sodoma Law took great care in renovating the historic home to accommodate office spaces. They graciously opened their doors for tours and invited guest to relax on the grand front porch with wine and snacks.

Charlotte B-cycle also joined the tour this year. In an effort to help us reduce parking issues and increase sustainable

transportation, Charlotte B-cycle offered visitors free bike rentals during the tour. You may have seen more people pedaling around the streets that weekend. It's the best way to enjoy our neighborhood and travel during the tour!

Feedback on the tour was enthusiastic and we greatly appreciate it. In the tour brochure, we announced a date change for the 2018 tour. Many of you shared your thoughts about that. We take your feedback seriously and because of it, the date will not change. The Dilworth Home Tour will stay in September!

Our home tour is a long standing tradition and the only fundraiser for the Dilworth Community Association. We are truly grateful to the generosity of the homeowners, community sponsors, and volunteers who make this event possible.

With a sell out crowd of close to 1500 visitors, be sure to buy your tickets early for the 2018 tour! ■



The location, the style, the feeling you get when you walk through the door – every aspect of your home should be a reflection of who you are, where you've been and the life you aspire to live.

Your best life begins with a home that inspires you. Let us find your inspiration.

Charlotte, North Carolina
premiersir.com/id/3318196
704.248.0243

Premier | Sotheby's
INTERNATIONAL REALTY

PREMIERSOTHEBYSREALTY.COM

Sotheby's International Realty™ and the Sotheby's International Realty logo are registered service marks used with permission. Each office is independently owned and operated. Equal Housing Opportunity. Property information herein is derived from various sources including, but not limited to, county records and multiple listing services, and may include approximations. All information is deemed accurate.

Tom Sykes Rec Center Programs

Winter Calendar

December 2017 – February 2018

Pre-registration* is required for all programs. You can register online at www.parkandrec.com, by calling Tom Sykes Recreation Center at 980/314-1113 or by stopping by the center. For more information about all of Tom Sykes Recreation Center programs contact TomSykesRecreationCenter@MecklenburgCountyNC.gov



Brunch with Santa

Bring your family and have brunch with Santa and his elves. Kids will also enjoy making reindeer food, participating in a variety of festive games and creating numerous holiday crafts. Continental

brunch provided. Don't forget your camera!

DECEMBER 16 REGISTER TODAY. LIMITED SPOTS AVAILABLE.

Register: contact center or online at

www.parkandrec.com, Click: **EParks2.0**, Click: **Activities**

AGES: 2-6 COST: \$6 per child

YOUTH SPORTS REGISTER NOVEMBER 1

Start Smart Lacrosse (Spring)

Start Smart Lacrosse is a 6-week program that teaches children the basic skills necessary to play the sport. The program prepares children for organized lacrosse play in a fun, non-threatening environment.

When: (Afterschool - 6 Wednesdays) Feb. 14, 21, 28, March 7, 14, 28

Ages: 7-9

Cost: \$65

Start Smart Baseball

Tom Sykes start smart baseball is designed to provide the basic fundamentals of baseball in a recreational setting. Participants will learn the rules of baseball and the techniques used for hitting, pitching, grounding a ball and throwing in a game like setting. For More Information Contact TomSykesRecreationCenter@MecklenburgCountyNC.gov or 980/314-1113.

When: (Afterschool - 6 Wednesdays) April 25, May 2, 9, 16, 23, 30

Ages: 7-9

Cost: \$65

Youth Track & Field (Spring) Registration Feb. 1st

Events include the 100 meter dash, 400 meter dash, 4x100 meter dash, long jump, and softball throw.

When: Practice begins early March, Meets on Saturdays

Ages: 5-14

Cost: \$65, includes a uniform & trophy

Indoor Fun Soccer (Spring)

Learn the basics of the sport and have FUN! Practice will be Tuesday or Thursday night beginning mid-March.

When: Practice begins mid-March, games on Saturdays (6 game season)

Ages: 3-4, 5-6, 7-8

Cost: \$45, includes a uniform & participation medal

PRESCHOOL PROGRAMS

Music Together of Charlotte

Music Together is children and their grownups joyfully sharing songs, rhymes, movement, and instrument play, both in music class and in their daily lives. A pioneer in early childhood music and movement education, Music Together offers classes in which parents and caregivers actively participate.

When: Mon.-Sat.

Ages: 8 months-5 years

Contact: musictogetherofcharlotte@gmail.com

AFTER SCHOOL PROGRAMS

Days: Every Monday, Tuesday, Thursday, Friday

Time: 2:45pm-5:00pm *Ages:* 5-10 *Cost:* \$5 per class

For more information, contact

Tom Sykes Recreation Center at 980-314-1113

Art Adventures: Mondays (Nov.13th – Jan 29th)

Explore drawing, painting, and collage, designed around themes to develop your imagination and observation skills.

Lego Engineering: Tuesdays (Nov. 14th – Jan 30th)

Participants will explore their creative minds using their imagination building with

thousands of Legos while developing creative, social, & expressive skills!

Interactive Gaming: Thursdays (Nov. 16th – Feb 1st)

Sharpen your skills through the latest interactive video games along with a countless variety of board games along with Wii Sports, foosball and basketball shot!

Free Play Fridays: Fridays (All Fridays)

Come enjoy a fantastic Friday with our afterschool program! Participants will have a wide variety of activities to choose from and our staff will have a specialized activity that will vary week to week for the kids to take part in.

SUMMER CAMPS REGISTER FEBRUARY 1

When: Monday-Friday • *Time:* 8am-5pm

Ages: 6-12 • *Cost:* \$80.00

For more information, contact

Tom Sykes Recreation Center at 980-314-1113

Week 1: Say "Yes" to the Mess Art Week

This is the quintessential arts and crafts week! A literal hodgepodge of activities and mediums that include crayons, pottery, clay, duct tape, etc... the sky is the limit! We'll use all the good crafty verbs guaranteed to inspire: Sketching, blending, carving, molding, sculpting, pasting, painting!

Week 2: Hut, Hut! SYKE! Sports Week

Sports week will offer a variety of traditional sports. Discipline, Sportsmanship, and Integrity are some character development traits that will be presented in this fun and positive environment. Learn new skills as we explore a new specialty sport each day. Camps are designed for all ability levels (no experience necessary).

Week 3: H2O + Sun = Fun! Swim Week

Jump into this week for unique swimming experiences with pool games and splash parks. Our daily activities will include classes on basic first aid and water safety skills. We will focus on pool and splash ground safety while learning about proper pool and park etiquette.

Week 4: Around the World in 5 Days Culture Week

Get your passport stamped as we travel around the world visiting different cultures/countries/customs through games, crafts and food. Track where we are traveling daily and celebrate international customs and diversity!

Week 5: So you think you can Act? Theatre Week

Calling all superstars to step into the spotlight and showcase your talents through skits, games, dance, music and creative arts. Enter our Tom Sykes Talent Show and show us the Next Big Thing!

Week 6: Natural Explorers Adventure Land Week

Great adventures await campers in this week filled with conquering great obstacle courses, outdoor activities an adventure through the nature trails and more!

continued on page 30

FAMILY OWNED

Dilworth Mattress Factory
- Handcrafted, Est. 1931 -

TAILOR MADE

211 W. WORTHINGTON AVE. CHARLOTTE, NC 704-333-6564

Robert Heyward Home Repair & Renovations

* For ALL of Your Home & Yard Needs *

704/364-3591

35 years locally owned and operated ... not a franchise

rhcllc1051@aol.com

FREE ESTIMATES

Our Excellent References can be contacted.



BBB
A+
Rating



209 MCDONALD AVE.
CHARLOTTE, NC 28203

CAMPBELL'S GREENHOUSES
& NURSERY

FOLIAGE & FLOWERING PLANTS

(704) 331-9659

MON-SAT 9:30-5:00

FAX (704) 375-0489

Week 7: Summer Safari Animal Week

Come take a walk on the WILD side! Participants will have fun engaging in the natural habitats of animals through everyday summer camp experiments and hands on activities. Get up close and personal with some of your favorite mammals, birds, reptiles and amphibians!

Week 8: Under Construction! Builders Week

Your creative builder will have a chance to test their best building techniques building LEGO and KNEK projects and use their imaginations to build their own projects. Campers will learn hands on techniques that will allow them to become creative thinkers, problem solvers and effectively work in organized teams.

YOUTH PROGRAMS

Volleyball Private or Group Lessons

Whether your player(s) is new to the game or is looking to work on specific skills and techniques to enhance their game, private and group lessons at Tom Sykes Recreation Center will help your player achieve the goals they set! Call 980/314-1113 to schedule an appointment today!

Ages: 8-17

Pricing: \$10.00/hr

Juggling: Wednesday & Fridays

Teach the basics of Juggling scarves, balls, and rings and will work into a performance for the school

When: Jan. 3rd - Feb. 2nd

Cost: \$6.00 per class

Ages: 5-12

Play the Day Away (Out of School Days)

Come and join the staff at Tom Sykes as we spend the day playing games, doing arts and crafts, sports, gym activities, and just having fun! Occurs on most CMS school day outs.

When: Dec. 20, 21, 22, 27, 28, 29, Jan. 15, 22, Feb. 19, March 29, 30

Time: 9am-5pm

Cost: \$30 per day

Music: Piano Lessons

Piano lessons available for all ages and skill levels!

When: Monday and Wednesday

Time: Beginning at 4:30pm

Cost: Half Hour Lesson - \$23

Contact: Amouel Brackett at amouel@aol.com or 704/965-1235

Coming Soon!

Bike Initiative Programs:

Coming Soon to Tom Sykes Recreation Center we will have bike programs dedicated to instructional - learning how to ride a bike, bike and traffic safety as well as group bike riding! For more information, please contact Tom Sykes Recreation Center at 980/314-1113! ■



CHANEL * FACE À FACE * BARTON PERREIRA * GUCCI * TOM FORD * TORY BURCH * PRODESIGN * MAUI JIM



EXPERIENCE A NEW *STYLE* IN EYE CARE!

704.348.1500
www.innovativeeyecare.net
1710 Kenilworth Avenue, Suite 210

INNOVATIVE
eye care
VISION HEALTH STYLE
OD, PLLC



ARE YOU SICK AND TIRED OF
FEELING
SICK AND
TIRED

Now Accepting Wellness Center Patients

"Our new wellness programs are here to help you get the most out of your terrific life. Learn more on our website and sign up for our FREE Health & Wellness Evaluation."

- Josh & Jamie Rimany

Our New Programs Include:

- Enhance: Stress/Sleep/Mood
- Empower: Weight Loss
- Energize: Energy and Optimum Wellness
- Regain: Anti-Aging/Sexual Health

1300 B East Blvd
Charlotte 704-910-4288
DilworthDrug.com



DILWORTH
Drug & Wellness Center