



Dilworth Community Association  
 PO Box 36023  
 Charlotte, NC 28236-6023

NON PROFIT  
 US POSTAGE  
 PAID  
 PERMIT NO. 502  
 CHARLOTTE, NC



# Dilworth Quarterly

March 2016

## Don't Miss

Meet the 2016 DCA President, Mathew Demetriades. **His letter is on page 2.**

Find out just what ingredients go into making a great party. **Go to page 4.**

A developer has proposed a project in Dilworth that doesn't even face a street. **Learn where on page 7.**

Remember a treasured friend and neighbor **on page 9.**

Help rid Latta Park of invasives. What are those? When? Where? **Find out on page 10.**

The annual Dilworth Criterium is just around the corner. **Details are on page 16.**

Car break-ins continue to blight Dilworth. Learn how you can protect your belongings. **See the article on page 23.**

## Golden Triangle of Good Urbanism

In a previous issue of the *Dilworth Quarterly*, I discussed several of the factors behind the explosion of similar apartment complexes in SouthEnd, and to a lesser extent in Elizabeth and along Central Avenue. With the extension of the light rail line to the UNC Charlotte campus, many similar developments are taking place along that corridor as far north as 36th Street in NoDa. The one sentence summary of that essay reads: high levels of demand, strong demographics, weak zoning controls and generic design based on short-term economic thinking.



**Fig. 1:** Empty plaza at Carson Boulevard in SouthEnd. The blank walls and "cars behind bars" strip all possibilities of pedestrian life from this desolate space.

To that list we should add one rather more shocking factor: many developers and their designers don't really understand good urban design – that is, the design of the public spaces and infrastructure in our city. That is nowhere more evident than in the numerous developments that present us with "cars behind bars," the depressing street level condition where pedestrians are forced to walk along sidewalks lined only with metal grilles partially screening vehicles, and devoid of human life and activity.

That bareness of blank, or even hostile walls lining pedestrian sidewalks is not only depressing to look at, it can be actively dangerous, especially at night. Nobody is

using that space or watching over it. There is no human activity: there are no stoops, front doors or shops that contain life and social contacts. In soulless environments like these, where residents or shoppers or office workers are not hanging out or bustling around, the presence of any other person on the street could signal danger.

This is self evident, and well documented in professional design literature, and the design solutions to promote safe pedestrian environments along our streets are well known. But here in

Charlotte our zoning regulations in that regard are outdated. In a situation like ours, a developer and his or her architect know that they can "get away with" long stretches of blank walls and "cars behind bars." (See Fig. 1) With no incentive to do better design, a developer can execute the cheapest possible solution and dump the repercussions of poor urban design firmly on the residents of neighborhoods like ours and SouthEnd. In development economics, the process of getting someone other than the developer to deal with consequences of poor design – long after the company has made its profit and moved on – is known as increasing the "externalities." That simply means increasing one's profit by pushing off as many costs and consequences

continued on page 25

## Spring has Sprung!

2231 Winthrop Avenue

501 Meacham Street

3421 Park Road

**LIBBY GONYEA**  
 BROKER / REALTOR®  
 704. 975. 8513  
 lgonyea@helenadamsrealty.com

*Your Trusted  
 Dilworth Neighbor & Realtor*

[www.libbygonyea.helenadamsrealty.com](http://www.libbygonyea.helenadamsrealty.com)

## Table of Contents

- 4 Dilworth Cares
- 7 Land Use
- 9 Home & Garden
- 10 Neighborhood Environment
- 13 Merchant News
- 14 Don't Miss
- 16 Dilworth Criterium
- 17 Dilworth Ladies Holiday Party Recap
- 19 Tom Sykes Rec Center Winter Programs
- 23 A Matter of Safety
- 30 ...and finally

### Deadline for Next Issue:

**Ads: April 15**

If you are interested in advertising in the Quarterly, email Mary Beth Sensabaugh at [msensabaugh@carolina.rr.com](mailto:msensabaugh@carolina.rr.com). Rates and sizes can be found on [dilworthonline.org](http://dilworthonline.org).

**Copy: April 29**

Copy and ads received after the deadline may be held for a later issue.



The Dilworth Quarterly is written by volunteers and proudly printed on 30% reused and 100% recycled paper. It is published under the direction of the DCA and is mailed 4 times a year to over 4500 households and businesses in the Dilworth community. While we make every reasonable effort to verify the integrity of our advertisers, we do not endorse products or services unless specifically stated.

## From the President



Mathew Demetriades,  
DCA President

## Charlotte's Best Neighborhood...

I am afraid that Google and Wikipedia have made a mistake. Whenever I Google "Dilworth," here is what comes up: "Dilworth is a neighborhood of Charlotte, Mecklenburg County, North Carolina, USA. The neighborhood was Charlotte's first streetcar suburb and was established by Edward Dilworth Latta in the 1890s on 250 acres southwest of the original city limits." With the help of Wikipedia, the definition also mentions the tree lined streets of Dilworth, Carolinas Medical Center, and the Dilworth Historic District being on the National Register of Historic Places. They certainly are correct about their facts. So, why do I think they made a mistake? They forgot to include that the greatest people live and work in Dilworth – The best neighborhood in Charlotte and I think the Carolinas.

It is truly an honor to serve as the 2016 President of the Dilworth Community Association. I have lived in Charlotte for 15 years and in Dilworth for 10 years. I have loved being a Dilworth resident. The wonderful walkability of the neighborhood, great restaurants and stores all around, and most of all the terrific neighbors and friends are the things that I love the most about our Dilworth.

The DCA had a great year in 2015. Past President Cynthia Schwartz (who is currently serving as the Dilworth Quarterly Editor), and the DCA officers last year have left huge shoes for me to fill. So much was accomplished in 2015, including, an awesome new Dilworth Community Garden that began to grow in July, a terrific Dilworth Jubilee in August, and a great Dilworth Home Tour in September. Even in the spring, there was a great party - Triple B at Triple C, and then the Ladies of Dilworth Spring Party. The year concluded with our Ladies of Dilworth Holiday Party, where fun was had by all. Have you checked out the Dilworth Website? Just go to [www.dilworthonline.org](http://www.dilworthonline.org). It was also redone in 2015, and looks great. Thank you to all the hardworking dedicated Dilworth volunteers who made this all possible.

My main goal as 2016 DCA President is to improve neighborhood participation in the DCA, and I promise, it is easy for you to get involved. The mission of the DCA is "To foster an inviting, vibrant, safe community by encouraging historic preservation and collaborating for thoughtful growth." How can we stay true to our mission? With you!

Here are just a few of the many Dilworth events that you can participate in:

**Latta Park Initiative:** Read about the Latta Park improvements in the Dilworth Quarterly and Dilworth Express, and join the cause to beautify Latta Park. We are going to have Community Workdays in the park which will be fun to be a part of, all while helping maintain this jewel that we have in our neighborhood.

**Dilworth Jubilee:** This event at Latta Park was a huge success last summer in August. For it to be a success again, your participation and support is required. Please be on the lookout for more information on the Jubilee Online and in the Dilworth Express.

**Dilworth Home Tour:** This September event brings all of Charlotte and even some folks from surrounding towns to our neighborhood. The DCA's largest fundraiser, it would not take place without volunteers to staff the homes. An easy way for you to get involved; you can sign up for two hour or three hour shifts to work the Home Tour.

If you have not already done so, please sign up for the **Dilworth Express online newsletter**. It goes out each week and has information on Dilworth and South End events. Simply go to [www.dilworthonline.org](http://www.dilworthonline.org) and follow the prompts to sign up. **Please make sure that you complete all of the fields.**

I am quite excited about the 2016 year, and am so grateful to work with such a great Board. Special thanks in advance to the board members who give so much of their time and talents: **Aaron Newlander, Amanda Anderson, Betty Hunter, Cheryl Anne Mclean, Cindy Miller, Courtenay Buchan, Cynthia Schwartz, David Walters, Jill Walker, John Fryday, John Gresham, Julie Nofsinger, Keely Edwards, Keith Lehr, Lilly Young, Michael Baker, Sis Kaplan, and Walt Guyer.** Without them, the DCA would not be the success that it can be.

Please join us and get involved this year. And maybe Google and Wikipedia will one day edit their write-up about Dilworth to include: "The best neighborhood in Charlotte and the Carolinas because the greatest people live and work in Dilworth." It's worth a shot. ■

## 2015 DCA Officers

**Mathew Demetriades**  
President

**Courtenay Buchan**  
President Elect

**Betty Hunter**  
Treasurer

**Cynthia Schwartz**  
Past President

**Courtenay Buchan**  
Secretary

## Board Members

Term Expires 2016	Term Expires 2017	Term Expires 2018
<b>Amanda Pipkin Anderson</b> Communications / Website	<b>Keely Edwards</b> Events	<b>Sis Kaplan</b> Land Use / Events)
<b>John Fryday</b>	<b>Walt Guyer</b> Land Use	<b>Lilly Young</b> Dilworth Cares
<b>John Gresham</b>	<b>Keith Lehr</b> Events	<b>Michael Baker</b> Events / Community Garden
<b>Julie Nofsinger</b> Neighborhood Environment / Community Garden	<b>CherylAnne McLean</b> Communications	<b>Cindy Miller</b> Events
<b>Jill Walker</b> Land Use, Chairperson	<b>David Walters</b> Neighborhood Environment Chairperson	<b>Aaron Newlander</b> Land Use / Events

## Home Tour Committee

**Courtenay Buchan**  
2016 Home Tour Chairperson

**DCA meets in the Tom Sykes Recreation Center on the first Wednesday of each month at 7 p.m.**

## Dilworth Quarterly Staff

Editor  
**Cynthia Schwartz**

Advertising Sales  
**Mary Beth Sensabaugh**

Photographer  
**Terry Loeb**

Design  
**Rachel Hewitt**

Printing  
**JM Graphics**

### Feature Writers

Courtenay Buchan  
Arlene Fenlon

Carolin Kirsh  
Cynthia Schwartz

Kenya Smith  
David Walters

# Dilworth Cares

By Arlene Fenlon

## What Makes a Great Party?

The Second Annual Triple C at Triple C event is fast approaching and will take place on Friday, April 8 from 7 to 10 pm at Triple C Brewing Company, which is located in South End at 2900 Griffith Street. Tickets are available for \$40/person (when purchased in advance) at [www.dilworthonline.org](http://www.dilworthonline.org). Each ticket includes one free Triple C beer (or a glass of wine), a specialty barbeque



Chef Clark Barlowe of Heirloom Restaurant



Underground Detour

dinner prepared by Chef Clark Barlowe of Heirloom Restaurant, and the band Underground Detour playing live.

Dilworth Cares thanks Triple C Brewing Company, Chef Barlowe, Ralph McMillan and all of Underground Detour for their generosity. Profits from the April event will benefit Freedom School Partners.

What makes this event so special? Great people, great food, great music, and, who could forget, a great planning committee!

Great people! Sponsored by Dilworth Cares, the charitable arm of the Dilworth Community Association, this party is for all Dilworth residents and their friends and promises to be a fun neighborhood event that you won't want to miss! This is a chance to get together with your neighbors, socialize, enjoy a delicious barbeque meal and fabulous entertainment, all while supporting Freedom School Partners.

Great food! Again this year, Chef Clark Barlowe of Heirloom Restaurant in Coulwood/ Mountain Island Lake is providing culinary stylings. Heirloom ([www.heirloomrestaurantnc.com](http://www.heirloomrestaurantnc.com)) is known for its "locally sourced, globally inspired" menu that features the freshest local vegetables, fruits, seafood, meats and beverages in a unique, original and always changing culinary experience.

Chef Barlowe comes with impressive credentials, having

continued on page 29



Freedom School Partners

2014-2016 recipient of Dilworth Cares

## Freedom School Partners Needs Your Support

By Kenya Smith, Freedom School Partners

Freedom School Partners, Dilworth Cares chosen charity for 2014-2016, would like to extend a heartfelt thank you to everyone in the Dilworth community.

Freedom School Partners is so proud to have the opportunity to work in partnership with the Dilworth community. Together we can help unlock the long-term potential of children by igniting their passion for reading and learning. The impact is captured here in a journal quote from a Freedom School scholar/student: "I like Freedom Schools because it makes me feel like I'm somebody."

So from the staff of Freedom School Partners to the entire Dilworth community: Thank you! Thank you! Thank you for your commitment to scholars, families and education.

When school is not in session, low income children are susceptible to falling two-to-three years behind in reading, in large part because of the cumulative effects of summer learning loss. Without significant intervention, roughly three-quarters of students who are not reading on grade level by third grade never catch up.

Freedom School Partners is the Dilworth Cares campaign Recipient through August 2016. See below for current opportunities to lend your support. These can be dropped off at their office at 1030 Arosa Avenue.

- New and gently used books appropriate for K-8 to help build personal libraries for each Freedom School Scholar (many of whom have never owned a book);
- Magazines, especially *ESPN*, *Sports Illustrated*, *National Geographic* and other appropriate magazines;
- Household items and personal hygiene products to fill laundry baskets that are given to parents at the Parent Meetings:

Laundry detergent  
Dish detergent  
Toothpaste  
Soap

Toilet paper  
Toothbrushes  
Deodorant  
Cleaning supplies ■

CHARLOTTE  
w/ Art  
COLLECTIVE

**Save the Date** for the Charlotte ART Collective SPRING ART SHOW which brings fine arts/crafts to the Dilworth area on Saturday, April 9 from 10 am to 4pm at Avondale Church, 2821 Park Road. The show features top, local artists: painting, collage, photography, pottery, handbags, jewelry, book arts, prints, wood, metal, fiber, baskets, mosaics, handmade soap/cream, garden sculpture. It supports Dilworth Cares through a raffle of a "Basketful of ART" with proceeds going to their designated charity, Freedom School Partners.



### Join us for T. Reid Style Night

Saturday, March 12th  
Drop in 4-7 pm

Join us for a fun time and complimentary consultations with our skilled stylists! Have unused products? We'll show you how to use them! Have hair tools? We'll show you how to utilize them! Pins on Pinterest? We'll show you how to create them! Bring us your pictures and tools and drop in anytime 4pm to 7pm Saturday, March 12.

**T. Reid AND COMPANY**  
SALON AND SPA

429 EAST BOULEVARD • CHARLOTTE • 704.377.1511 • TREIDANDCOMPANY.COM



Linda Coad CPA, PA  
CERTIFIED PUBLIC ACCOUNTING



### Providing People with Knowledge

Over 20 years of experience in public and private accounting

#### Forensic Accounting and Litigation Support

#### Business Consulting

- Budgeting and Cash Flow Analysis
- Accounting Software Selection, Conversion and Implementation
- Accounting Staff Training and Support
- Start-Up Business Consulting

#### QuickBooks® Pro Advisor

- QuickBooks® Training Classes
- QuickBooks® Advisory Services
- Bookkeeping Services

#### Tax

- Individual, Estate and Corporate Tax Services
- IRS Representation
- Business Entity Selection

[www.lindacoadcpa.com](http://www.lindacoadcpa.com)



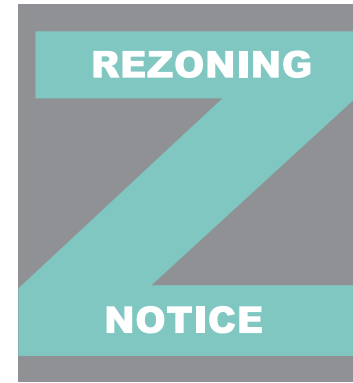
**Simply the Best...**

*Sophisticated, fashionable yet comfortable interiors with YOU in mind • Modern and Transitional designs for your home or office • Fabrics, custom upholstered furniture, custom drapery and window shades, lighting, rugs, bed linens, case goods, original artwork, reupholstery, pillows and accessories • No design fees with purchase • Free local delivery • Day and evening appointments available*

Thank you for 19 years in business!



1817 Hawkins Street • South End • Charlotte, NC 28203  
704-332-5454  
crazyjanesinc.com



# Land Use

## Re-zoning Updates

The Land Use Committee is actively working on aspects of the following projects or re-zonings:

**2.71 acres located on Marshall Place, Atherton St. and Euclid Ave.** – Rezoning Petition 2016-017 – Grandfather Homes request to rezone the site bordered by Atherton, Marshall and Euclid has led to continuing dialogue with the Land Use Committee, nearby neighbors, and the developer about density, setbacks and the site plan’s impact on the streetscape. Discussions have been fruitful and the developer responsive from one meeting to the next.

**The Dowd YMCA Renovation/Addition** that was leading to a rezoning of the YMCA property on Morehead is expanding to include a piece of property owned by Pritchard Church facing Cleveland and bordered by Lexington and Templeton. A four-to-five-level parking deck is proposed for the Pritchard site, with a primary entrance on Lexington and a secondary entrance on Templeton. Questions about traffic, circulation and the façade of the building remain under discussion. This project has brought up the continuing concern of the Land Use Committee and the neighbors with the density of the CHA Strawn Apartments site nearby and its affect on the nearby neighborhood streets and property. Additional meetings with Charlotte Department of Transportation (CDOT) are coming soon.

**Infill Project behind Copper Restaurant** – The property behind East Boulevard’s Copper Restaurant continues to be under review at many levels. This property is land-locked in that all of its connections to city streets are via the common alleys of the type found throughout Dilworth. So, there is no street frontage. The property to be developed is an infill space surrounded by other properties, including single-family residential homes, and the only ingress/egress proposed is through the alleys and the Copper parking lot. There are a number of legal issues too complicated to easily describe, but neighbors, who are parties to the alley ownership are in a lawsuit over the situation. Of major concern to the Land Use Committee is the possibility of this same situation popping up along other common alleys within the neighborhood. ■

DCDA Land Use Committee meets the third Wednesday of each month in the DCDA meeting room at the Tom Sykes Center (lower level) at 7pm, to review rezonings, planning guidelines, and other actions affecting our neighborhood. Contact Jill Walker at [jkwalker60@gmail.com](mailto:jkwalker60@gmail.com) for further information.



**OWEN**  
WEALTH ADVISORY  
OF  
**RAYMOND JAMES®**

My financial and investment planning process is unapologetically deliberate and unflashy – whether it’s planning for your retirement, a future education, passing along family assets, your business, or an unexpected life event.

I feel fortunate to be your local financial advisor and am proud of the contributions my family has made to Dilworth. I’m in the neighborhood. Let’s meet to discuss your needs.

**GEOFF OWEN, CFP®, CFA™, MBA**  
Financial Advisor

6805 Morrison Boulevard, Suite 350  
Charlotte, North Carolina 28211  
O 704.442.4776 // M 980.428.2297  
[geoff.owen@raymondjames.com](mailto:geoff.owen@raymondjames.com)  
[www.raymondjames.com/owen](http://www.raymondjames.com/owen)

CFP® | Certified Financial Planner™ | CFP®  
Certified Financial Planner Board of Standards, Inc., owns the certification marks above, which it awards to individuals who successfully complete initial and ongoing certification requirements. Raymond James is a registered trademark of Raymond James Financial, Inc.

YOUR BEST SOURCE FOR **experience** THAT MAKES ALL THE DIFFERENCE



AMANDA BLACKBURN  
704.516.9309



SUZANNE CODDINGTON  
704.589.7172



SARAH CURME  
704.578.7011



SUZY HUBBELL  
202.607.5688



KATHY LANCASTER  
704.534.5552



SHELLY RYDELL  
704.649.6530



WINNIE SIMMONS  
704.576.9225



CATHY SPEIZMAN  
704.258.1391



DIANE VERMILLION  
704.575.4007

*With more than 80+ years of combined selling & buying experience in Dilworth, our agents are true neighborhood specialists, who use intimate community knowledge to make your real estate dreams come true.*

Your Best Source for  
Residential Real Estate  
704.342.1000

Discover more at  
[dickensmitchener.com](http://dickensmitchener.com)



# Home & Garden

## In Memory of Jesse Campbell

*By Courtenay Buchan*

Last month, Charlotte lost a fixture of the community. Dilworth lost a treasured friend and neighbor.

Long before Lowe's and bustling South End growth, Campbell's Greenhouse and Nursery on McDonald was the garden center for Dilworth and its surrounds.

The proprietor, Jesse Campbell, was there, day in, day out, greeting customers with a smile and offering suggestions on how to pick the perfect floral expression for any occasion.

Jesse filled every vessel imaginable with floral beauty. He assembled masterful container gardens, shaped myriad bonsais and grew a staggering array of orchids. Jesse was a long-time supporter of Dilworth, sponsoring Home Tours and neighborhood fundraising events year after year, providing the finest wares from a local Dilworth proprietor for the community.

This spring, the porches of Dilworth will be dimmed, missing the artistry of Jesse's compositions. He will be sorely missed and our heartfelt condolences extend to his friends, family, and those who worked daily with him creating the magic of Campbell's Greenhouse.

Rest in peace, dear friend. ■



**Jesse-isms:** From Jesse's memorial, here are a few familiar funny quotes you may remember:

*"Girl, those are not greenhouse shoes."*

*"It's called water on this planet."*

*"Are your children ok, 'cause you sure killed these plants."*

*"Ma'am, you'll have to leave either the bag or the child with me, you're not going down that aisle with both."*

*"Thank you for bringing your parents to my greenhouse."*



209 MCDONALD AVE.  
CHARLOTTE, NC 28203

**CAMPBELL'S GREENHOUSES  
& NURSERY**

FOLIAGE & FLOWERING PLANTS  
(704) 331-9659  
MON-SAT 9:30-5:00  
FAX (704) 375-0489

**DILWORTH'S LITTLE SECRET**

Relocated & Expanded to:

2041 South Blvd., Ste. E  
(The Pavilion at South End)

☛ Interior and Exterior Gardening Items

☛ Gift Items ☛ Statuary ☛ Pottery

(704) 333-0995



# Neighborhood Environment

## Improving Historic Latta Park

By David Walters

The Neighborhood Environment Committee continues to work on two important projects this year: the now-established Community Garden off Kenilworth Avenue, and the new project for improving historic Latta Park.

The initial focus of the Latta Park work kicked off in January this year with a presentation to the DCA Board and a large group of residents by Gary Marshall, Natural Resources Coordinator for the Mecklenburg Parks and Recreation Department. Our main focus is to clear away “invasive” species and replant with native varieties of trees and shrubs. All work will be carried out with the help of neighborhood volunteers (that’s you and me!) in collaboration with County Park staff who will supply equipment and expert guidance. An additional important work topic is to collaborate further with Park staff to address the increasing erosion around walkways and footpaths. This latter objective will need professional County leadership for landscape reconstruction work, earth moving etc., which is not a matter for volunteer labor on its own, but we hope to provide assistance and “stimulus” to County staff wherever practicable.

We are moving briskly ahead with work on clearing invasive species and replanting with native plants this spring. Under the guidance of Dilworth residents Nancy Nicholson and Ruth Ann Grissom, we are learning the importance of having our park (and

our own gardens!) planted with species of trees and shrubs that are native to North Carolina, and resisting the siren song of exotic, foreign invasives.

Scientists and naturalists working at our state universities have shown that our state’s native plants provide better nourishment and protection for a diversity of wildlife, creating a well-adapted and resilient local ecology. (See for example, “Landscaping for Wildlife with Native Plants,” published by the NC Cooperative extension at NC State University). Helping us locally from UNC Charlotte, Ed Davis, the university’s horticulture supervisor, has agreed to draw up a design with plans about what native plants and where to plant.

“Native plants” are defined as those that occurred in North America before European settlement. These include well-loved examples such as the flowering dogwood, orange cornflower, flame azaleas, eastern redbud, goldenrod and cardinal flower. “Invasive plants,” by contrast, are foreign species brought to our state intentionally or by accident and which now grow unabatedly, forcing out native plants where they would otherwise occur. Examples include mimosa, kudzu, and Queen Anne’s lace. These invasives do not support local wildlife to anything like the same extent, and thus local ecologies break down.

Our clearing and replanting program, which began on Feb. 20th, and which continues with another work session on Saturday, March 5th, will help remedy this imbalance, and restore



Latta Park in winter.

Latta Park to a more “natural” condition befitting its historic status. Purposeful plantings of native species will be much more aesthetically pleasing than the unplanned miscellany that’s growing haphazardly in the park at the moment, mostly as a result of neglect.

A related, longer-term goal would be for Latta Park to be certified as a “Community Wildlife Habitat” under the auspices of the National Wildlife Federation. In December 2015, the Charlotte Observer honored the volunteers of CROWN (Charlotte Reconnecting Ourselves With Nature) for their work in educating Charlotte residents about the value of restoring and protecting our indigenous plants and natural systems. Latta Park can play a big role in this effort! To this end we are undertaking introductory clearing and planting this spring and planning a more significant planting in the fall. The program will extend into 2017 and possibly beyond.

As part of the Neighborhood Environment Committee’s continuing education program for the neighborhood, Beth Henry, a local expert on native and host plants, has agreed to speak to the Dilworth Community Association in April (tentative date Wednesday, April 6th). Look for more detailed information on that event and on the upcoming clearing and planting workdays in the Dilworth Express email notices. This is a great opportunity for neighbors to come together to help restore our great park to its former glory! ■

## Mark Your Calendars!

### Ladies of Dilworth Spring Party

This year’s Ladies of Dilworth Spring Party will be held in and around the pavilion in the beautiful Latta Park, conveniently located at 601 East Park Avenue in the heart of Dilworth! All ladies are invited to walk or ride bikes to attend the party on Thursday April 28th from 6-8 p.m. We are proud to announce that **the proceeds of the party will benefit the revitalization of Latta Park.**

So, come and indulge in seasonal cocktails and hors d’oeuvres while live music entertains you. And lucky raffle winners will take home the most fabulous prizes contributed by Dilworth’s most extraordinary retailers. Tickets are available at [www.dilworthonline.org](http://www.dilworthonline.org) for \$30 in advance of the event or \$35 at the door. We are looking forward to an engaging evening in such a charming location. Please come support a local treasure, enjoy food, drinks and a stroll in the park with the company of your neighbors. Have fun and make a difference! ■

### NEW DILWORTH NEIGHBORHOOD LISTING



### 808 LEXINGTON AVENUE

Charlotte, NC 28203

\$599,000 | 4 BR/ 2BA | MLS# 3136235

This classic Dilworth bungalow is meticulously maintained and features many recent updates including restored hardwoods on main, full bath renovation, paint upgrades, mantel restoration, new roof, new appliances and new driveway!



FOR MORE INFORMATION CONTACT REALTOR/BROKER SARAH CURME 704.578.7011 or [scurme@dmahomes.com](mailto:scurme@dmahomes.com)

Peter Bell, PLLC, the Dilworth neighbor you can count on for a variety of financial, accounting, and tax services to individuals and small business.

Visit our website for more information at [peterbellpllc.com](http://peterbellpllc.com)

1735 Dilworth Road East  
704.525.9999

Peter Bell, PLLC  
a CPA firm

From small repairs  
to new home construction

# H

No matter where the  
road of life takes you,  
it's always great to have  
a place to call home.

*Home Starts Here...*

# HASTON

General Contractors, Inc

Call us  
for a free  
consultation

704.256.9657



Brought to you by: Don Haston and Bill Caldwell



# Merchant *News*

## Sunflour Baking Company

This popular bakery café opened their Dilworth location at 220 East Boulevard in late January. Nestled in Dilly Place near the South Boulevard intersection, Sunflour has recreated its signature bakery and soup and sandwich combinations, which have proven so popular at its original location in the Elizabeth neighborhood.

Specialties such as giant, flakey croissants, creative cupcakes and sandwiches served on their own house-baked bread have already earned Sunflour a following among Dilworth and South End residents. Owners Umarin and Jack Parrish have striven to create an environment where guests can relax and enjoy their treats in a comfortable environment. Sunflour is open Mon. – Sat. from 7am to 7pm and on Sundays from 7am to 4pm and can be reached at 704/332-5222 and at sunflourbakingcompany.com ■

## Kid Cashew

Kid Cashew, a place to share flavors and laughter, features cuisine designed for sharing, inspired by farmers and butchers, sourced responsibly and prepared on a hickory wood-fire grill. “We aspire to stay as close to mother nature as possible.” says Giorgio Bakatsias, proprietor and James Beard nominated restaurateur.

Specialties of the menu include house-made tzatziki and hummus, Spanish octopus, Greek salad, pork panini, domestic leg of lamb, and all natural chicken. The beverage menu includes cocktails inspired by herbs and wines from the Mediterranean and California.

Open daily for lunch at 11am and dinner at 5pm. Brunch coming soon. 1608 East Boulevard, 704/208-4148 ■

If you're considering selling your Dilworth home in 2016, I would like the opportunity to meet with you. Hire an agent who:

Specializes in Historic Dilworth and Charlotte's in-town neighborhoods.

Is a skilled negotiator.

Is well-connected *and* well-respected in the real estate community.

Has Charlotte's TOP real estate marketing brokerage behind YOUR listing.



**Sarah Martin**

Broker, REALTOR®  
(704) 604-2445

Sarah@DilworthCharlotte.com

*Your Dilworth Real Estate Specialist.*

**SOLD!**

2014 New Hope Rd



www.DilworthCharlotte.com

**Savvy+Co**  
REAL ESTATE

1920 E. 7th Street | Charlotte, NC 28204 | [Social Media Icons]

Upcoming Events

# Don't Miss...

By Cynthia Schwartz

April 8

**Triple B at Triple C**

7:00-10:00 p.m.

Triple C Brewing Company, 2900 Griffith Street

Tickets are available Online at [www.dilworthonline.org](http://www.dilworthonline.org) for \$40 in advance of the event. Proceeds will be donated to Freedom School Partners. (See the *Dilworth Cares* article on page 5.) Tickets include one Triple C beer (or glass of wine), a BBQ dinner prepared by Chef Clark Barlowe of Heirloom Restaurant, and live entertainment by Underground Detour.

April 9

**Charlotte ART Collective Spring Art Show**

10:00 a.m. - 4:00 p.m.

Avondale Church, 2821 Park Road

The show features top, local artists: painting, collage, photography, pottery, handbags, jewelry, book arts, prints, wood, metal, fiber, baskets, mosaics, handmade soap/cream, garden sculpture. It supports Dilworth Cares through a raffle of a "Basketful of ART" with proceeds going to their designated charity, Freedom School Partners.

April 15

**The Salvation Army Women's Auxiliary's annual Festival of Tables**

9:30 a.m. - 1:00 p.m.

Sheraton Hotel in Uptown Charlotte

The keynote speaker is Molly Barker, founder of Girls on the Run International and The Red Boot Coalition. Emcee is Beth Troutman, Co-Anchor WCNC. Special guest, Kathleen Purvis, Food Editor at the Charlotte Observer, is a table judge, and copies of her cookbooks will be available for sale and for signing. See lovely table designs by top Charlotte designers and participate in a silent auction. Tickets are \$40 and the proceeds will go to programs benefiting women and children in need. Parking is free in the attached deck. Lunch is served at 12:00 noon. Please call 704/621-7187 to purchase tickets.

April 28

**Ladies of Dilworth Spring Party**

6:00-8:00 p.m.

Latta Park Pavilion, 601 East Park Avenue

Tickets are available Online at [www.dilworthonline.org](http://www.dilworthonline.org) for \$30 in advance of the event or \$35 at the door. Proceeds will benefit the revitalization of Latta Park. (See the *Neighborhood Environment* article on page 10.) We are looking forward to an engaging evening in such a charming location. Please come support a local treasure, enjoy food, drinks and a stroll in the park with the company of your neighbors and live music. Have fun and make a difference!

May 20 - 21

**Dilworth United Methodist Church's Annual Spring Musical: Joseph and the Amazing Technicolor Dreamcoat**  
8:00 p.m.

Dilworth United Methodist Church, 605 East Boulevard

Tickets are \$10 and will be available online at [www.dilworthchurch.org](http://www.dilworthchurch.org) or at the door (cash only). 25% of all proceeds donated to Dilworth non-profit, The Relatives ([www.therelatives.org](http://www.therelatives.org)). All are welcome. Auditions held on March 9, 10, & 11 from 6:00 - 9:00 p.m. at DUMC for roles for men and women, high school age through adult as well as a children's ensemble for students in grades 4-8. ([www.SignUpGenius.com/go/10C0C45AFA728A6FD0-joseph](http://www.SignUpGenius.com/go/10C0C45AFA728A6FD0-joseph)).

**Dilworth TOADS**

Dilworth TOADs (Toddlers Out and About in Dilworth) typically meet the first Wednesday afternoon of every month. Follow Dilworth TOADs on Facebook for updates and join the list-serve by emailing Corrie Manis at [dilworthtoads@gmail.com](mailto:dilworthtoads@gmail.com). Feel free to share any ideas for future playdates. We'd love to hear them!

**Myers Park Library**

**Weekly Storytime Schedule**

**Mondays** - Baby Storytime at 10:15 and 11:15 a.m. for ages birth thru 17 months

**Tuesdays** - Preschool Storytime at 11:00 a.m. for ages 2.5 thru 5 years

**Wednesdays** - Tiny Tots Storytime @ 10:30 a.m. for ages 18 to 36 months

**Saturdays** - Family Storytime at 11:00 a.m. for families with children under 8

**Seniors' Coffee Morning**

**2nd Thursday of each month** a new program from 10:00 a.m. - noon

Drop by for a cup of coffee, meet up with some friends or make some new ones.

**e-Reader Assistance**

Do you have need assistance downloading an eBook from the Library's website? Do you have a specific Nook, Kindle or OverDrive issue? Make an appointment for personal assistance by calling the Myers Park Library at 704/416-5800 ■

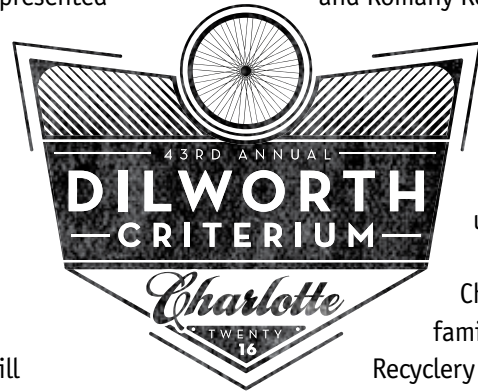


April 9

## 43rd Annual Dilworth Criterium

The historic 43rd annual Dilworth Criterium presented by Queen City Bicycles, Giordana, and BikeSource is set to take place on Saturday April 9, 2016. The Dilworth Criterium is a bicycle race and festival and will bring professional and amateur cyclists from all over the country to the Dilworth community. Past Dilworth Criteriums have drawn international pros from as many as 22 countries, including many national and world champion racers.

The best criterium riders on the continent will take over Dilworth for the day! This is the cycling world's equivalent of playing an NFL game in Latta Park – you just can't get this close to the action at other criteriums. Top finishers from the 2016 Dilworth Criterium will be invited to the The Amateur Shootout in Uptown Charlotte on Saturday evening, April 30. The criterium races circle the one-mile Latta Park loop. There are plenty of good vantage points on the course, but the most popular is the uphill start/finish line area near Myrtle Avenue



and Romany Road and the sharp left turn at Romany and Dilworth Roads.

There will also be family activities including the free kid's races. Kids from 2 to 12 can come out and race on anything with a seat and wheels – tricycle, bicycle, unicycle, you name it, we'll let 'em race!

If you want to check out some new wheels, Charlotte B-Cycle and BikeSource will have family bike test rides available. Trips for Kids Recyclery will be collecting used bikes, so take the opportunity to free up some space in the basement or garage for a good cause. There will be food and beverages for purchase in the vendor area, so bring the family out and make a day of it.

This is one of the oldest criterium events in the South and it's happening in your neighborhood – come be a part of it! For the full schedule of events, race course, etc., please visit [www.dilworthcrit.com](http://www.dilworthcrit.com). ■

December 10, 2015

## Dilworth Ladies Holiday Party Recap



Dilworth Ladies Planning Committee

By Carolin Kirsh

There are many things that make Dilworth a great place to live: good neighbors, quality merchants, and dedicated volunteers. All of these came together on December 10th at the 17th Annual Dilworth Ladies Holiday party. While the venue and planning committee may change each year, the spirit of Dilworth is always present.

A new venue, Charlotte Trolley Museum, was introduced this year. The exposed brick walls and antique trolley were a great background for the party and reminded us of Dilworth's historic connection. The guests were entertained with music from Michael Brynes and chats with Santa Claus and his elf. Hors d'oeuvres were prepared by the Dilworth Ladies Hostesses and served by our Dilworth Ladies' Men along with libations, including our annual holiday cocktail. Tickets for raffle items provided by 30 merchants were sold with proceeds benefitting the Freedom School Partners, a summer literacy program for at risk youth. (See the *Dilworth Cares* article on page 5.) The party was attended by 150 ladies who enjoyed a very special night. Photos can be ordered from our neighbor, Nancy Williams, at [www.nwilliamsphoto.pixieset.com/](http://www.nwilliamsphoto.pixieset.com/) with password DLHP15.

We would like to thank those who helped make this night great. Modern Lighting Design Store was our Crystal sponsor, and raffle items were generously provided by CycleSouth, Kathy Wilder Interiors, Pure Barre, Y2 Yoga, Laura James Jewelry, Original Art (Taylor Presson), Off Broadway Shoe Warehouse, Revolution Clothiers, Blossom Shop, Fundanoodle, Music Together of Charlotte, Polished Nail Bar, Folicle Hair Salon, Almar Auto, Dr Seitlin, Club Fetch, Long Animal Hospital, Iron Tribe Fitness, Lotus Acupuncture, Va! Wellness + Bodywork,



Dilworth Ladies enjoying time with Santa

MayoBird, Nan and Byron's, Angela Arno Necklace, Brian Paradise Landscaping, Culpepper Home Improvement, Blue Hem, Vironica Dawson Photography, Bonterra, leela and lee, and Packaging Solutions.

And finally, a huge thank you goes to the Dilworth Ladies Hostesses for their planning and preparation and to the Dilworth Ladies' Men for their outstanding service. ■



Where your pets are our family.

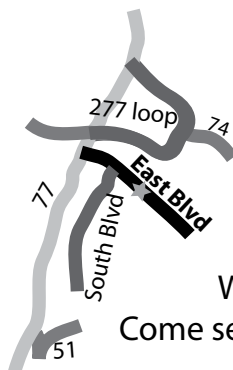
Matthew Wheelock, DVM - Jill Smith-Wheelock, DVM  
Michelle Managan, DVM

704-808-PETS (7387)

[www.DilworthAnimalHospital.com](http://www.DilworthAnimalHospital.com)

814 East Blvd

Charlotte, NC 28203



We're right around the corner.  
Come see what all the excitement is about!!



RON SKUFCA  
ATTORNEY

Representing Business Owners in their  
Professional and Personal Lives.

BUSINESS LAW | CONSTRUCTION | FAMILY LAW



Offices: Charlotte, NC • Concord, NC  
1514 South Church St., Ste 101  
Charlotte, NC 28203  
704.376.3030 x 3  
[ron@moretzandskufca.com](mailto:ron@moretzandskufca.com)

[www.moretzandskufca.com/attorneys/skufca/](http://www.moretzandskufca.com/attorneys/skufca/)  
[www.linkedin.com/in/rskufca](http://www.linkedin.com/in/rskufca) [www.facebook.com/ron.skufca.law](http://www.facebook.com/ron.skufca.law)



**Great food. Legendary wings. 32 draft beers.  
Extensive whiskey selection. 90pt wine list.  
Craft cocktails.**

**Your neighborhood gathering spot for all  
college/NFL football, NHL hockey, college/NBA  
basketball and soccer on our 16 huge TVs.**

Stop by and say hello! 2200 Park Road • 704.335.0033 • edstavern.com

**Now Open For Lunch All Week!**

# Tom Sykes Rec Center Programs

## Winter Calendar

**February 2016 – June 2-16**

**Pre-registration** is required for all programs. You can register online at [www.parkandrec.com](http://www.parkandrec.com), by calling Tom Sykes Recreation Center at 980-314-1113 or by stopping by the center. For more information about all of Tom Sykes Recreation Center programs contact [TomSykesRecreationCenter@MecklenburgCountyNC.gov](mailto:TomSykesRecreationCenter@MecklenburgCountyNC.gov)

### Volunteer Coaches Needed!

Tom Sykes Recreation Center needs coaches for Indoor Soccer and Track & Field, March-May  
Contact: [TomSykesRecreationCenter@MecklenburgCountyNC.Gov](mailto:TomSykesRecreationCenter@MecklenburgCountyNC.Gov)

#### YOUTH SPORTS

##### Start Smart Lacrosse (Spring)

Registration starts February 1st. Start Smart Lacrosse is a 6-week program that teaches children the basic skills necessary to play the sport. The program prepares children for organized lacrosse play in a fun, non-threatening environment.

*When:* (afterschool, Wednesdays) March 2, 9, 16, 23 and April 6, 13  
*Ages:* 7-9 *Cost:* \$65

##### Start Smart Volleyball (Spring)

Registration starts February 1st. Start Smart Volleyball is a 6-week program that teaches children the basic skills necessary to play the sport. The program prepares children for organized volleyball play.

*When:* (afterschool, Wednesdays) April 27, May 4, 11, 18, 25 and June 1  
*Ages:* 7-9 *Cost:* \$65

##### Tom Sykes Triple Threat Shootout (Spring)

Participants will compete in a basketball shootout featuring a 3pt shootout, Hotshot, and a 3 on 3 tournament. Families can enjoy food and great entertainment. The winner will receive a medal and overall champions will receive trophies. Cost includes T-shirt, and 4 vouchers for refreshments.

*When:* April 2nd *Ages:* 9-17 years  
*Cost:* \$20

##### Youth Track & Field (Spring)

Registration starts February 1st. Events include the 100 meter dash, 400 meter dash, 4x100 meter dash, long jump, and softball throw.

*When:* Practice begins early March, Meets on Saturdays  
*Ages:* 5-14 *Cost:* \$65, includes a uniform & trophy

#### Indoor Fun Soccer (Spring)

Registration starts February 1st. Learn the basics of the sport and have FUN! Practice will be Tuesday or Thursday night beginning mid-March. 6 game season!

*When:* Practice begins mid-March, Games on Saturdays  
*Ages:* 3-4, 5-6, 7-8  
*Cost:* \$45, includes a uniform & participation medal

#### PRESCHOOL PROGRAMS

##### Easter Bunny Brunch/Egg Hunt (Spring)

Bring your Camera and meet the Easter bunny while enjoying festive snacks. Make several Easter crafts including Magical Bunny Food; Participate in a variety of games such as the Egg Race, Sack Race and Bunny Hop! Enjoy an Easter Egg Hunt to win hundreds of hidden prizes and special golden egg prizes!

*When:* Saturday, March 19th *Time:* 10:30am-12:30pm  
*Ages:* 2-10 years *Cost:* \$6

##### Music Together of Charlotte

Music Together is children and their grownups joyfully sharing songs, rhymes, movement, and instrument play, both in music class and in their daily lives. A pioneer in early childhood music and movement education, Music Together offers classes in which parents and caregivers actively participate.

*When:* Mon.-Sat. *Ages:* 8 months-5yrs  
*Contact:* [musictogetherofcharlotte@gmail.com](mailto:musictogetherofcharlotte@gmail.com)

continued on page 20

**Summerfield TIRE & SERVICE**

**SPRING SPECIALS**

Only \$ **49** Oil Change Brake Inspection OR 10% Factory Scheduled Maintenance  
A/C Check Tire Rotation OFF

**Dilworth's Auto Repair Experts**

(704) 820-4344  
2507 Park Rd [www.summerfieldtireandservice.com](http://www.summerfieldtireandservice.com)

Offer good on most cars and light trucks, up to 5qts of non-synthetic motor oil.



CONTACT YOUR  
DILWORTH  
NEIGHBORHOOD  
EXPERT



ISABEL ROBERTS  
REALTOR®/BROKER

704.607.5560  
iroberts@dickensmitchener.com

18 YEARS OF BUYING & SELLING  
EXPERIENCE IN DILWORTH



Your Best Source for Residential Real Estate.

**AFTER SCHOOL PROGRAMS**

Spring Cycle Registration Starts February 1st  
Days: Every Monday, Tuesday, and Thursday  
Time: 2:45pm-4:30pm Ages: 5-10  
Cost: \$5 per class

**Intro to Sports**

Participants will have fun learning the basics of a different sport each week. Soccer, football, basketball and nontraditional sports will be explored.  
When: 1st and 3rd Monday of each month

**Fort Building**

Using teamwork and engineering skills, participants will design a template for their forts and build them together with materials gathered from around the facility.  
When: 2nd and 4th Monday of each month

**Art Adventures**

Explore drawing, painting, etc. designed around themes to develop your imagination & observation skills.  
When: 1st and 3rd Tuesday of each month

**Lego Engineering**

Learn by making & develop creative, social and expressive skills. We will work together to build cool projects.  
When: 2nd and 4th Tuesday each month

**Interactive Gaming**

Sharpen your skills through latest interactive video games along with lots of board games, air hockey, foosball, basketball shot, etc.  
When: 1st and 3rd Thursday of each month

**Lights-Camera-Action!**

Participants will enjoy theatre art through group interaction incorporating short plays, music, prop building, puppet shows, learning sound effects while have fun! Participants will perform a play for family & friends.  
When: 2nd and 4th Thursday of each month

**Combo Days**

Join us as we combine our regularly scheduled programs. Combo days will only be when we have a 5th week in the month and we will rotate the scheduled activities.

**Robert Heyward Home  
Repair & Renovations**

\* For ALL of Your Home & Yard Needs \*

704/364-3591

35 years locally owned and operated ... not a franchise

rhcllc1051@aol.com

FREE ESTIMATES



Our Excellent References can be contacted.

BBB  
A+  
Rating



**SUMMER CAMPS**

Register Starting February 1st!

When: Monday-Friday Time: 8am-5pm  
Ages: 9-12 Years Cost: \$100

**4-H Center Stage Theater Arts June 20-24**

This curriculum opens the world of theatre offering extended activities in communication, improvisation, pantomime, script writing, cultural and historical influences, stage design, and costume design. Life skills and workforce development concepts are woven throughout the curriculum, as youth master more sophisticated theatre techniques and ideas.

**4-H: Motorsports**

When: June 27- July 1  
Participants will experience the life of a pit crew as they design, update and race radio-controlled cars. Participants will use specific math, engineering and technology skills to solve real life racing problems. We will visit Nascar Hall of Fame.

**4-H: Robotics Rocks**

When: July 11-July 15  
4-H Robotics introduces robotics to youth while developing decision-making and critical thinking skills, and implements an understanding of scientific and engineering design processes as they build real virtual robots. Youth will use the tools of technology to enhance their learning to be able to apply the skills and knowledge they are developing to new challenges.

**4-H: Into the Wild**

When: July 18-July 22  
Come take a walk on the WILD side! Participants will have fun engaging in the natural habitats of animals and earth science through everyday camp experiments and hands on activities. Get up close and personal with some of your favorite mammals, birds, reptiles and amphibians!

**4-H: Aerospace Lift-Off**

When: July 25-July 29  
Are you fascinated with flying an airplane, launching a rocket, exploring space or becoming an astronaut or pilot, then this camp is for you! Designed to stimulate interest and enthusiasm for limitless opportunities through fun and challenging activities, youth will learn about airplanes, kites, gliders, space shuttles, helicopters and more, along with workforce competencies and other life skills.

**Under Construction: Builders Camp**

When: August 1-August 5  
Your builders will have a chance to test their best techniques building LEGO and KNEX projects. Campers will learn hands on techniques that will allow them to become problem solvers and effectively work in organized teams.

continued on page 22

**GENE MAPLES, DVM**  
2135 SOUTHEND DRIVE, SUITE 106  
CHARLOTTE, NC 28203  
(LOCATED BEHIND CHIPOTLE ON SOUTH BLVD)  
P: 704.632.8012 | F: 704.632.8016  
INFO@SOUTHENDVET.COM

**SOUTHEND  
VETERINARY CLINIC**  
SOUTHENDVET.COM

**Lantern & Scroll**

**A better lighting showroom experience.**


For exteriors and interiors, starting at \$225.  
Handmade in the Carolinas!

a brilliant first impression




2041 South Boulevard, Charlotte . NC 28203  
704.333.5088 | buyfrom@lanternandscroll.com  
www.lanternandscroll.com

BALANCE YOUR HEALTH




MIND  
BODY &  
SPIRIT

*More Than a Pharmacy*



Dilworth Drug & Wellness Center is a place patients come to be advised on integrative solutions to health and wellness. Stop by and ask Jamie and Josh ways to **Live better, stay well.**

1300 B East Blvd | Charlotte, NC 28203  
704-910-4288 | Dilworthdrug.com



**DILWORTH**  
Drug & Wellness Center

**YOUTH PROGRAMS**

**Play the Day Away (Out of School Days)**

Come and join the staff at Tom Sykes as we spend the day playing games, doing arts and crafts, sports, gym activities, and just having fun!  
*When:* March 29, 29, 30, 31 and April 1, 25  
*Time:* 9am-5pm *Cost:* \$30 per day

**Music: Piano Lessons**

Piano lessons available for all ages and skill levels!  
*When:* Monday and Wednesday *Time:* Beginning at 4:30pm  
*Cost:* Half Hour Lesson - \$23  
*Contact:* Amouel Brackett at amouel@aol.com or 704/965-1235

**ADULT PROGRAMS**

**Aerobics: DanceOut!**

Easy to follow, hot dance moves from all different styles of dance and movement, including Hip Hop, Pop, Latin, Reggae, African, Belly, Swing & Martial Arts to give you a cardio workout that feels like a party!  
*When:* Mondays 7-8:30pm and Fridays 6-7pm  
*Contact:* Angie@queencitydancingqueen.com or 704/526-8845 or visit QueenCityDancingQueen.com ■

**Triple B at  
Triple C**  
**Beer, Specialty BBQ & Live Band**

**Triple C Brewing Co,  
Heirloom Restaurant  
& Underground Detour**  
 partnering with  
**Dilworth Community Association**  
 to benefit Freedom School Partners

**When:**  
 Friday, April 8 • 7 pm to 10 pm

**Where:**  
 Triple C Brewery • 2900 Griffith Street

**Tickets:**  
 \$40 a person.



**A Matter of Safety**



My name is Jim Gilliland, and I am the Community Coordinator (neighborhood officer) for the Dilworth and Freedom Park areas. I have served in this role since 2007. I attend your community meetings and try to keep you updated on crime trends. For the past several years, larceny from autos (car break-ins) has been and continues to be our biggest challenge.

These crimes happen throughout the neighborhoods and usually occur in multiples. The Charlotte Mecklenburg Police Department (CMPD) has found that the related suspects usually travel in groups up and down neighborhood streets checking for unlocked vehicles. In a recent spree, every vehicle targeted was reported unlocked (whether on purpose or by accident). Unfortunately, and far too often, these larcenies become vehicle thefts when the criminals locate a spare key. Please make sure you don't have a spare key inside your vehicle. Perhaps the "valet" key in the glove-box?

Less than ten percent of larcenies from autos involve a window smash or some other type of forced-entry, which will occur if the opportunity is there. A purse or computer bag can be just enough temptation to break out a window. Larceny from autos can be prevented by removing valuables (bags, wallets, and cash... even visible coins). A recent police report listed items stolen to include \$1,000 cash and a handgun... a real "jackpot!" These kinds of finds will keep the thieves coming back to the area time and time again.

While we do see some repeat offenders when arrests are made, the majority are new suspects. Quite simply, it is an attractive crime as long as it is so rewarding. And the CMPD needs your help. Please lock your cars and remove valuables. To borrow a phrase from a co-worker, "The easiest crime to commit is also the easiest crime to prevent".

Report any suspicious activity by calling 911. If you have any questions or concerns please feel free to contact me at jgilliland@cmpd.org.

Thank you and stay safe,  
 Jim ■

*Runners:*  
**Right is Wrong**

If you are running in the road and are running with traffic (on the right), you are putting your safety in the hands of the drivers behind you. **Move to the left side of the road, face traffic and react as necessary.**

**Not only is it unsafe, it's illegal.** North Carolina General Statute 20-174 states: Where sidewalks are provided, it shall be unlawful for any pedestrian to walk along and upon an adjacent roadway. Where sidewalks are not provided, any pedestrian walking along and upon a highway shall, when practicable, walk only on the extreme left of the roadway or its shoulder, facing traffic which may approach from the opposite direction. Such pedestrian shall yield the right-of-way to approaching traffic. ■

**CHARLOTTE'S  
PREMIER  
NAIL BAR.**

MANICURES, PEDICURES, GEL MANICURES,  
FULL BODY WAXING + EYELASH EXTENSIONS



SOUTH END 704-954-0004   MYERS PARK 704-375-3488   SOUTH PARK 704-643-9199   BALLANTYNE 980-819-8330   HUNTERSVILLE 980-689-2014

**POLISHED**  
*Nail Bar*  
**IPOLISHED.COM**

f /POLISHEDNAILBAR   i /POLISHED\_NAIL\_BAR   t /IPOLISHED   p /POLISHEDNAILBAR



NOTHING bundt CAKES®

Throw a celebration that takes the cake.

Charlotte  
601 S Kings Dr • (704) 909-4577

NOTHINGBUNDTCAKES.COM

*Golden Triangle*

continued from cover

as possible onto other parties and leaving them to deal with them. This is something that every business school teaches its graduates.

In cities where planning regulations are based on proper urban design principles that explicitly don't allow these bad designs to occur (Portland, Oregon and Vancouver come immediately to mind) the streets are more active and aesthetically pleasing, and hence, in the perception of a pedestrian, more welcoming and safer. This is because cars are kept in their place, behind buildings or in an underground level, allowing the edges to streets and plazas to be formed by buildings with active uses spilling into the public space. There are costs involved with this, but they are known by all parties up front and built-into the developers' calculations from the outset.

There is a very simple urban design concept that all architects, planners and neighbors can easily learn: it's called "the Golden Triangle." To understand this simple idea, I should explain briefly what "urban design" actually is.

Urban design deals with the functionality, beauty and safety of what urban designers like myself call "the public realm," that is, the spaces between buildings – streets, plazas and

parks – that comprise the democratically shared spaces used by all citizens. Urban designers are very interested in buildings, but not as sculptural objects, which is how most architects are taught to see them. Rather, the buildings' façades become walls to outdoor "urban rooms."

To understand this better, just think about the inside of your home or your workplace. Building interiors have busy areas and quiet areas, public places like great rooms, lounges and canteens, and private areas for individual work, study or relaxation. There are corridors for moving, rooms line hallways, and windows frame views. Urban design does all these same things, but out in the open air.

Hallways become streets. Public lounges become plazas. Rooms become individual buildings. Gardens and yards become parks. Voids between buildings frame views just like windows. In this context, the ways in which building façades "address the street" become very important. We judge an urban neighborhood such as Dilworth by walking around, getting a feel for the human scale of the place, and looking to be entertained, informed or stimulated. How buildings frame these spaces – with welcoming grace and proportion or blankness and hostility – is key to our perception of community character.

So back to the "Golden Triangle:" the zone of space at

continued on page 27

**DILWORTH NEIGHBOR & REALTOR FOR OVER A DECADE**

"I'm demanding and not easily pleased, but Chris not only meets my expectations, he exceeds them. I've dealt with plenty of realtors over the years, but Chris is in a class by himself. I wouldn't even consider using anyone else." *Joseph Cavano*

For a free, private consultation  
email [chris@cacartergroup.com](mailto:chris@cacartergroup.com)  
call 704-619-8594  
[CarterGroupRealtors.com](http://CarterGroupRealtors.com)

**CHRIS CARTER**  
Broker/Owner/CPA

8 year  
5 Star  
Realtor

# Discover The Unique Home Our Design Team Can Create For You!



Our unique Design/Build team includes Architects, Kitchen & Bath Designers and Construction Professionals. We are experts in Historical Renovation projects.



**KITCHEN & BATH | OUTDOOR LIVING SPACES  
REMODELING & ADDITIONS | CUSTOM HOMES  
ARCHITECTURAL DESIGN | INTERIOR DESIGN**

Offices in 342 Circle Avenue in Myers Park  
704.307.4606 JohnMorgan@ubgcharlotte.com  
Visit Us Online at [UrbanBuildingGroup.com](http://UrbanBuildingGroup.com)

Call us to learn how you can receive a FREE design consultation.

## THE UBG PROCESS

**ONSITE CONSULTATION:**  
Evaluation of your project goals, time-frame and budget feasibility.

**DESIGN DEVELOPMENT:**  
UBG's Design Team works with you to generate creative options to achieve your project goals.

**PROJECT ESTIMATE:**  
The scope of work, detailed pricing and construction agreement are generated and presented.

**WORKING PLANS:**  
Engineering and construction plans are completed as needed.

**MATERIAL SPECIFICATIONS:**  
Our design department will assist you in the selection process and cataloging.

**START OF CONSTRUCTION:**  
You will be assigned a project manager to coordinate the daily activities on your project.



## Golden Triangle

continued from 25



**Fig. 2:** Assembly Row, Somerville (Boston) MA. Draw a triangle in your mind's eye, vertically up two stories on the left hand side behind the Le Creuset sign, and horizontally on the ground to the right just beyond the parked Mini. Then complete the hypotenuse and you have a triangle that captures all the required elements of good street design.

the sidewalk, framed vertically by the first two stories of the building façade, and horizontally by the sidewalk, seating, landscape planting, bike lanes and on-street parking. The *Figure 2* shows a development in Boston, MA. Here you can see all the elements of a good public street in action: wide sidewalks; storefronts with windows and doors that allow people to see in and out; offices or housing above to provide a mixed population that creates activity throughout the day; lively signage; seating and regular tree planting for shade; and a layer of on-street parking to protect pedestrians from moving traffic. All other car parking is screened by the buildings and therefore does not disrupt the pedestrian public space. This is what major streets in SouthEnd could look like; in Dilworth we would have a lower scale but with similar design elements.

The *Figure 3* shows an example at a lower, local scale from one of SouthEnd's more successful developments. This again illustrates how cars can be successfully screened from the sidewalk and how the lowest floor of the residential building comes down to touch the sidewalk by means of a stoop. This simple gesture makes all the difference in creating a human scaled street scene. See how easy it can be?

Achieving this urban design quality is not about fancy materials. It's a product of designers understanding communities at a variety of scales, from whole neighborhoods down to individual blocks, and ultimately focusing on the intimate spaces we inhabit on a daily basis – walking to work or home, or to shop, waiting for a bus or train, or simply sitting on our porch or at a sidewalk café. All of this activity occurs



**Fig. 3:** Residential Building in SouthEnd. This façade has good variations, but the most important elements are the stoops that connect the housing with the street.

within the "Golden Triangle." Next time you're out and about, see how few of our new developments meet these criteria, and help us insist that from this date forward, all new ones should!

## DILWORTH IS A SELLER'S MARKET

If you are considering a move this year, NOW is the time to list your home for sale before the Spring Market gets into full swing! Currently, there is less competition on the market which will give you an advantage.

**It would be my honor to have the opportunity to assist you.**

I am a long-time resident of Dilworth and a top producing real estate broker for over 25 years. I look forward to hearing from you!



**JANE ANNE McDERMOTT**

Broker/Realtor®  
Top Producer

DILWORTH RESIDENT

704-651-9690

[janeanne@hmproperties.com](mailto:janeanne@hmproperties.com)  
[hmproperties.com](http://hmproperties.com)

When hiring a real estate agent, it's important to find one who:

- lives in your neighborhood.
- has a proven track record listing and selling homes in Dilworth.
- understands that most of Dilworth is in a Designated Historic District and what that means to buyers and sellers.
- is a strong negotiator for pricing, repairs, etc.
- is well-connected within the real estate community.
- has an extensive network of trusted friends who are real estate attorneys, inspectors, builders, contractors, mortgage lenders, insurance providers, etc.
- provides exceptional service to each client!

**HM PROPERTIES**



**FEATURED  
DILWORTH  
LISTINGS**



**1100 Lexington Avenue**  
 \$1,250,000 • 4,000+ sq ft  
 5 bedrooms / 4 baths  
 + complete kitchen, living & dining room renovations made in 2015  
 + finished basement, home office  
 + 2 car garage



**527 Dilworth Mews Court**  
 \$699,000 • 2,800+ sq ft  
 4 bedrooms / 3.5 baths  
 + intricate millworking & stained glass features  
 + home office/den & living room  
 + 1 car garage/workshop

**Thinking  
of selling?**



**Dilworth resident since 2000.**  
 Branch leader in listings closed & specializing in the urban real estate market since 2001.

**Elizabeth Phares**  
 Allen Tate - Center City Office  
 704.651.8562  
 elizabeth.phares@allentate.com  
 allentate.com/ElizabethPhares



**808 E. Worthington Avenue**  
 2,200+ sq ft  
 3 bedrooms / 2.5 baths + den



**Center City Office:**  
 201 S. Tryon Street, Suite 120

LEADING REAL ESTATE COMPANIES OF THE WORLD

Center City • Dilworth • Plaza Midwood • Elizabeth • Wesley Heights • Southend • Wilmore • Myers Park

*Great Party*

continued from page 4



Left to right: Suzy Hubbell, Lilly Young, Anne Gildea, Sally McMillan, Chris Harker (Triple C), Marcia Rowse, Jill Walker, Chef Clark Barlowe. Contact Nancy Williams at nancyroger@carolina.rr.com to view/purchase photos from the 2015 event.

worked at the French Laundry in Napa, California, El Bulli in Spain, Chez Pascal in Providence, Rhode Island, and North Rock in Bermuda. Chef Barlowe has appeared on Chopped with Bobby Flay, and Heirloom most recently was listed among the 50 Best Restaurants in *Charlotte Magazine* (January 2016). He was also a contender for the James Beard Award.

Great music! Long time Dilworth resident Ralph McMillan

(since 1983!) and the Underground Detour are again providing the “Band” in Triple B at Triple C. Underground Detour plays rock n’ roll from the 70’s and 80’s. Led by Ralph, Underground Detour has been practicing in his home for 16 years. They got their name from an old road sign that still hangs in their practice room—in the McMillan’s man-cave basement.

Underground Detour plays for private parties, but like Chef Barlowe and Triple C Brewing Company they lend their talents and support to a number of local nonprofits, including A Child’s Place, Hospice & Palliative Care, Battered Women’s Shelter, and Canine Walk for Cancer, as well as our own Dilworth Cares.

Current members are: Ralph McMillan (guitar), David Barnhardt (drums), Jerry Perillo (guitar), Tony Lathrop (bass guitar), Lenore Priscoe (keyboard), Kelly Campbell (bass guitar and percussion), Daniel McCullough (guitar), and Reid Phillips (guitar).

Great planning! Again this year, the planning committee for Triple B at Triple C includes Anne Gildea, Suzy Hubbell, Marcia Rowse, Jill Walker, and Lilly Young with support from members of Dilworth Cares. Moreover, although Chef Barlowe will be providing the barbeque and sides, and the Dilworth Cares committee members will provide the desserts.

This is a party not to miss! Mark your calendars for Friday, April 8th! ■



CHANEL \* FACE À FACE \* BARTON PERREIRA \* GUCCI \* TOM FORD \* TORY BURCH \* PRODESIGN \* MAUI JIM



Dr. Michelle Mumford, Optometrist

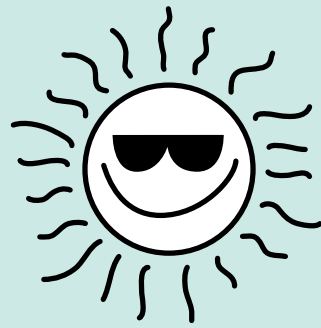
EXPERIENCE A NEW *STYLE* IN EYE CARE!

704.348.1500  
 www.innovativeeyecare.net  
 1710 Kenilworth Avenue, Suite 210

**INNOVATIVE**  
*eye care*  
 VISION HEALTH STYLE



...and finally  
**Calling All Young  
 Entrepreneurs**



The June issue of the *Dilworth Quarterly* will feature the popular *Summer Connections*. If you are a student who is looking for part time work, this is your opportunity to advertise your specialty for free. Your 70-85 word submission should include your **name, age, the service you are offering** and **how you can be reached**. If you want, you can also include any other selling points (experience, pricing, where you go to school, etc).

To submit your ad:

- Sign up for the weekly *Dilworth Express* emails. Visit [www.DilworthOnline.org](http://www.DilworthOnline.org), click on the "Register Here" button under "Dilworth Express" and populate the email address, first name, last name, phone number, and address fields. When the *Dilworth Express* announces submissions – reply to the address given
- or
- Email your submission to [Cynthia.Schwartz@live.com](mailto:Cynthia.Schwartz@live.com). **Be sure to put in the SUBJECT LINE: DILWORTH QUARTERLY - Summer Connections**

**Submissions MUST be received by Sunday April 24. ■**

**Save the Date:**  
**2016 Dilworth Jubilee**  
**August 27**  
 For sponsorship or volunteer information contact  
 Keith Lehr at [2016dilworthjubilee@hotmail.com](mailto:2016dilworthjubilee@hotmail.com)

# Thinking About Selling?

Call your Dilworth Real Estate Experts, We Know the Market!

## Giving Tree Realty

37 Days  
 97.3% of List Price

VS.

## The Other Guys

54 Days  
 96.4 of List Price

**Visit [www.RealEstateInDilworth.com](http://www.RealEstateInDilworth.com)  
 for your FREE Home Valuation**

A donation is made to Charity on every home sold by Giving Tree Realty



LUXURY HOMES  
 Giving Tree Realty



## Why Giving Tree Realty?

- ▷ We have buyers!
- ▷ We sell homes for more money!
- ▷ We sell homes faster!
- ▷ We know Dilworth Real Estate!

Brandy Gaiser-Bleiman & Bruce Bleiman  
 1244 East Blvd., Charlotte, NC 28203  
[Brandy@GivingTreeRealty.com](mailto:Brandy@GivingTreeRealty.com) | 704-408-0367



[www.GivingTreeRealty.com](http://www.GivingTreeRealty.com)

*We are moving to our new building  
 at 1244 East Blvd.!*

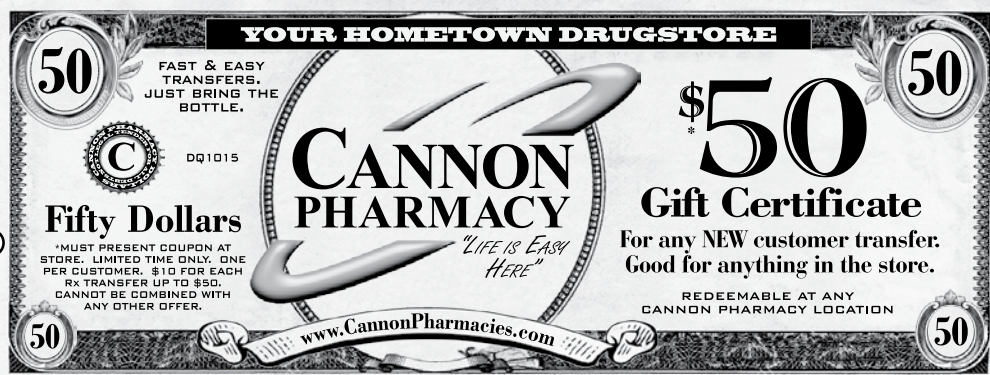
Stop by to see our renovations and say 'hello neighbor'!



# CANNON PHARMACY

"LIFE IS EASY HERE"  
 Your Hometown Drugstore

- Convenient drive thru
- Free delivery
- Immunization services
- Low prices
- Friendly service
- Durable medical equipment



Dilworth · 2334 South Blvd. · (704) 523-8607  
[www.CannonPharmacies.com](http://www.CannonPharmacies.com)